



Paula Pando
28300003
College President

Ann Bushey
28300437
Executive Assistant
to the President

Amelia Bradshaw
283FA019
Vice President,
Finance and
Administration/Chief
Financial Officer

Elizabeth Creamer
283FA400
Vice President,
Workforce
Development

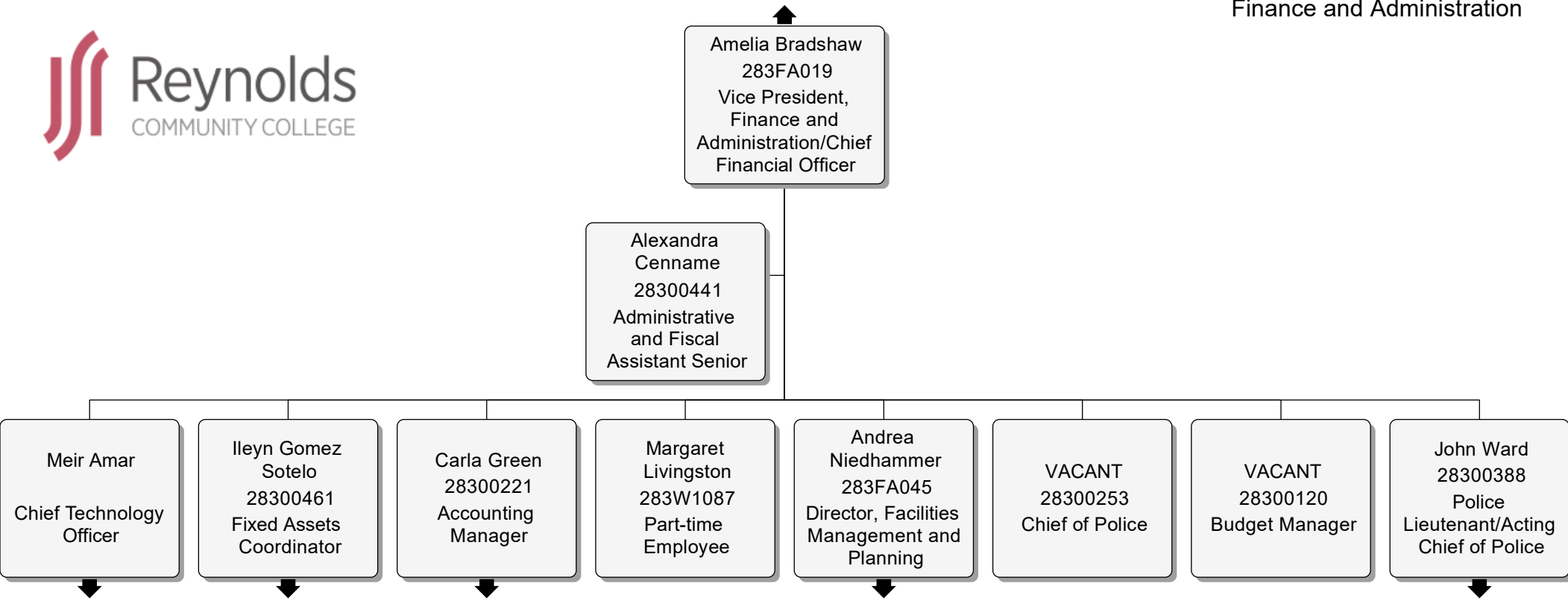
Lori Dwyer
283FA418
Vice President,
Academic
Affairs/Chief
Academic Officer

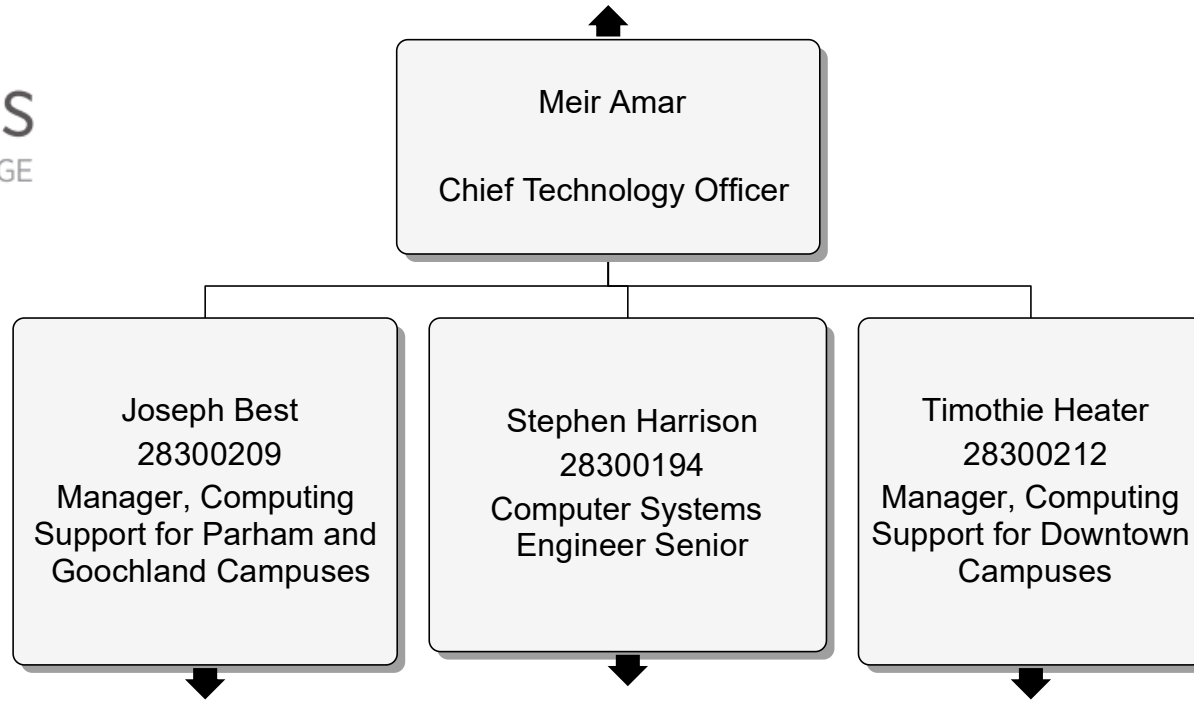
Elizabeth Littlefield
283FA110
Vice President,
Institutional
Advancement and
Strategic Planning

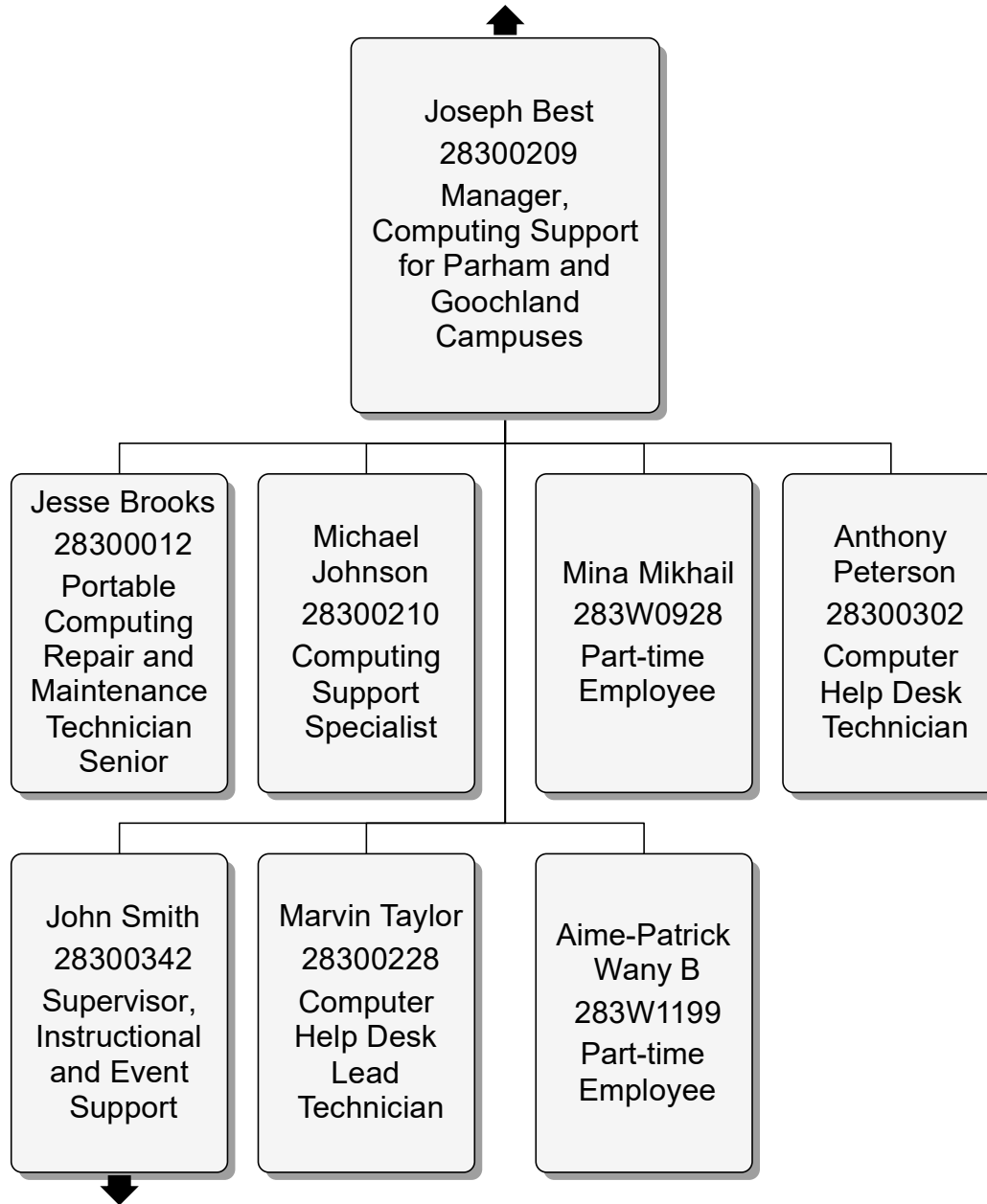
Maria Poindexter
283FA403
Coordinator,
Professional
Development and
Acting Director,
Human Resources
and Organizational
Development

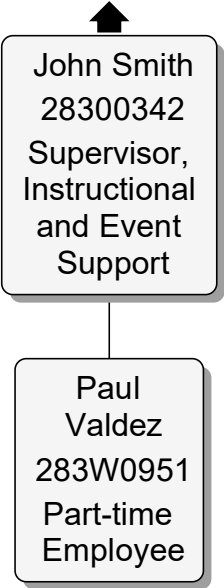
Terrcita Sass
283FA404
Vice President,
Enrollment
Management and
Student Success

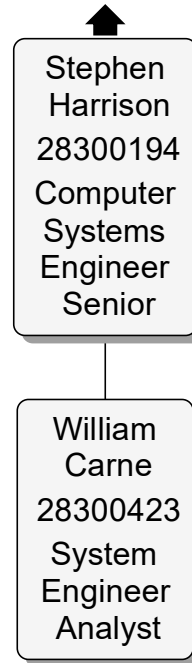
VACANT
283FA420
Vice President,
Organizational
Development and
Human
Resources/Chief
Diversity Officer

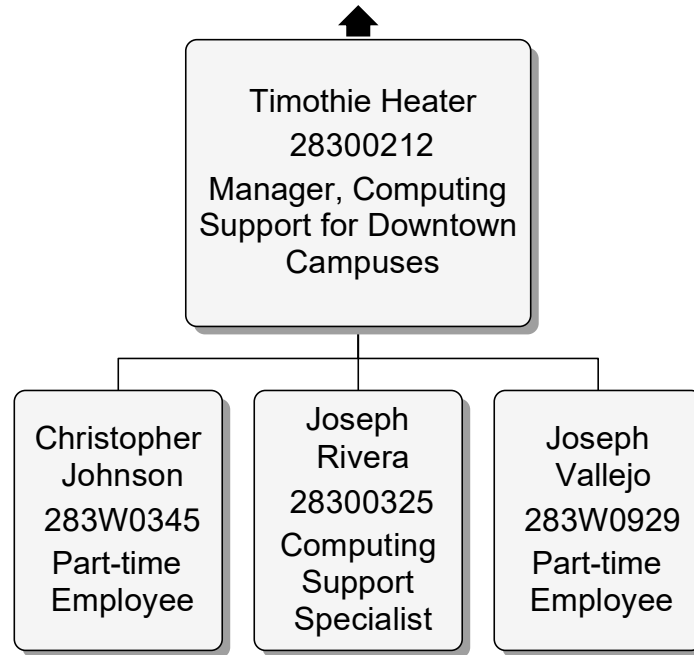


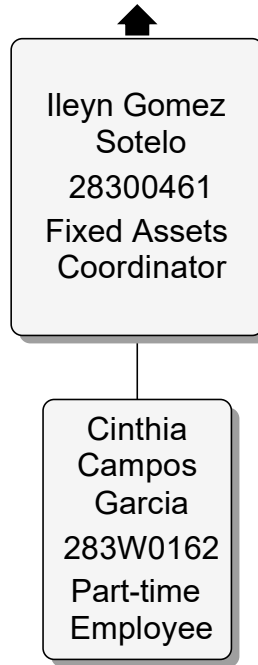


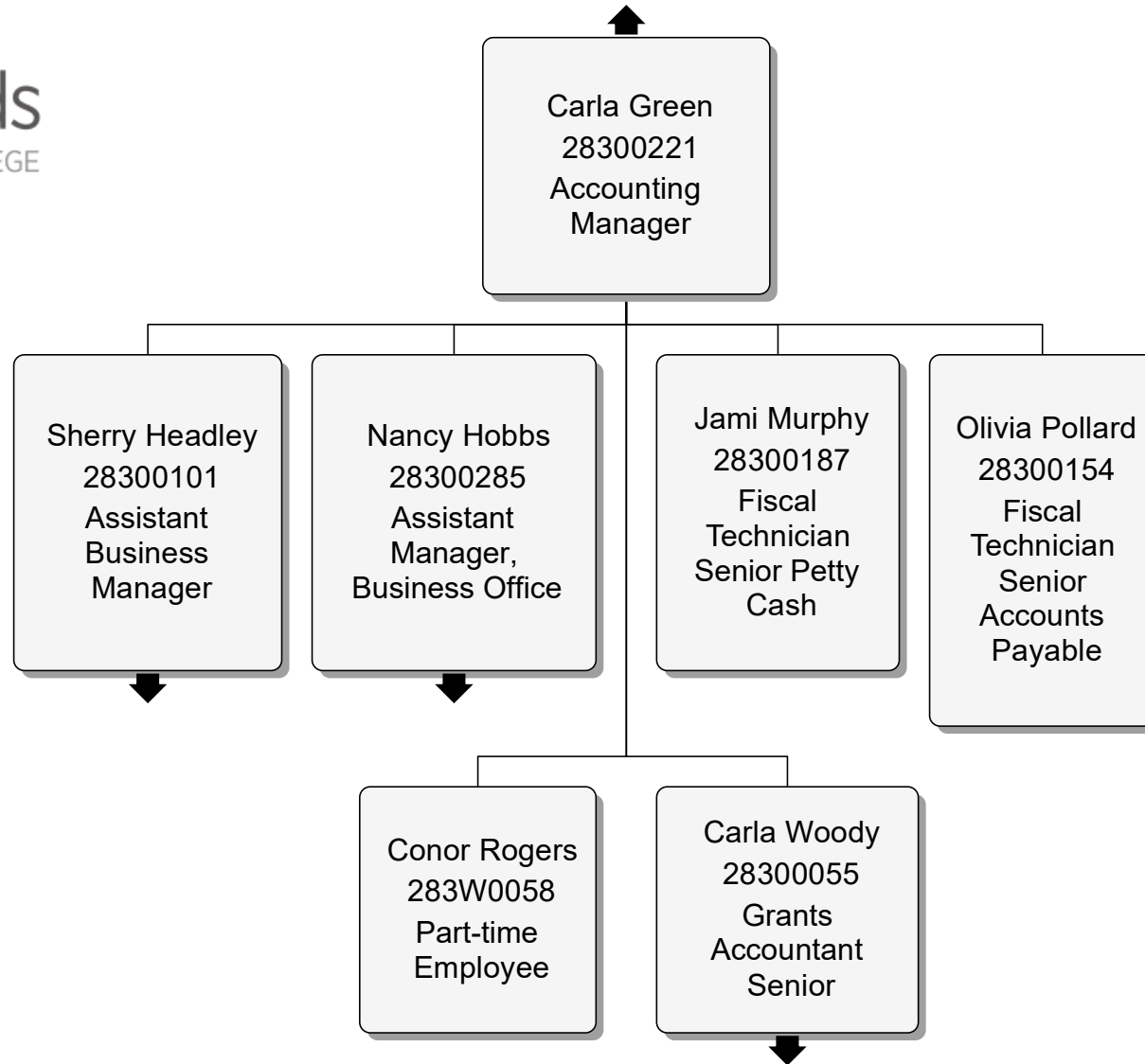


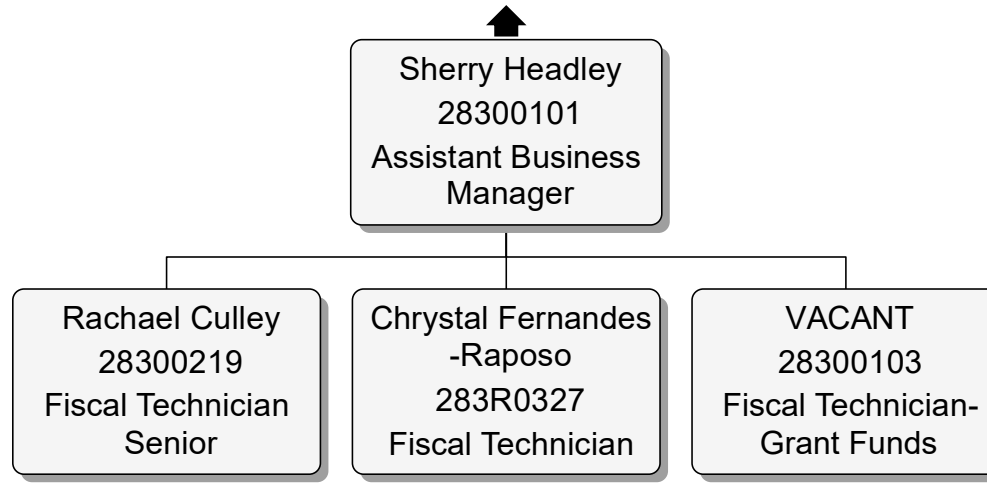


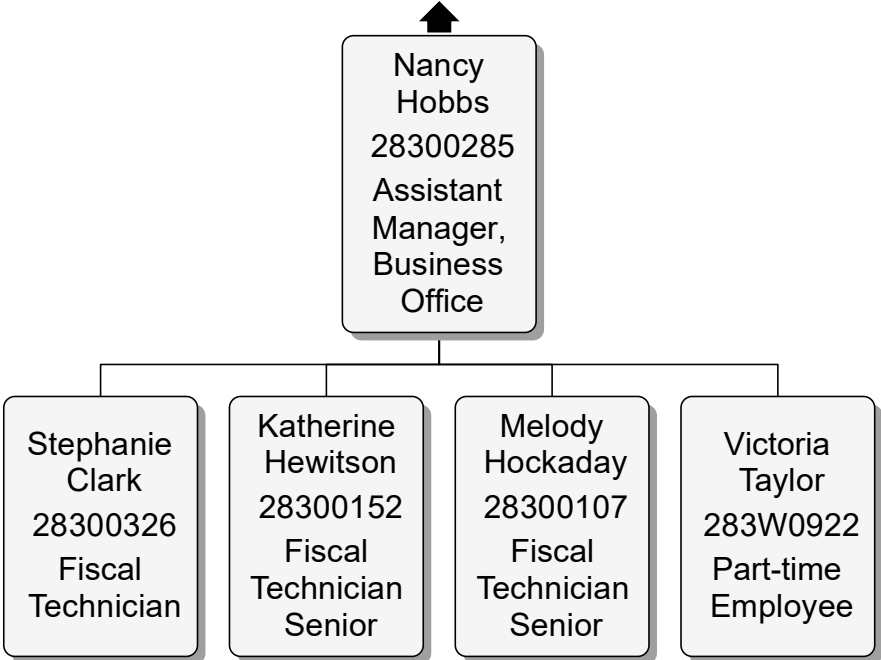


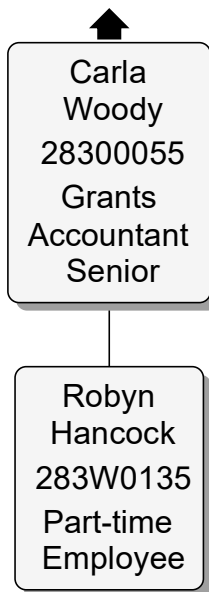


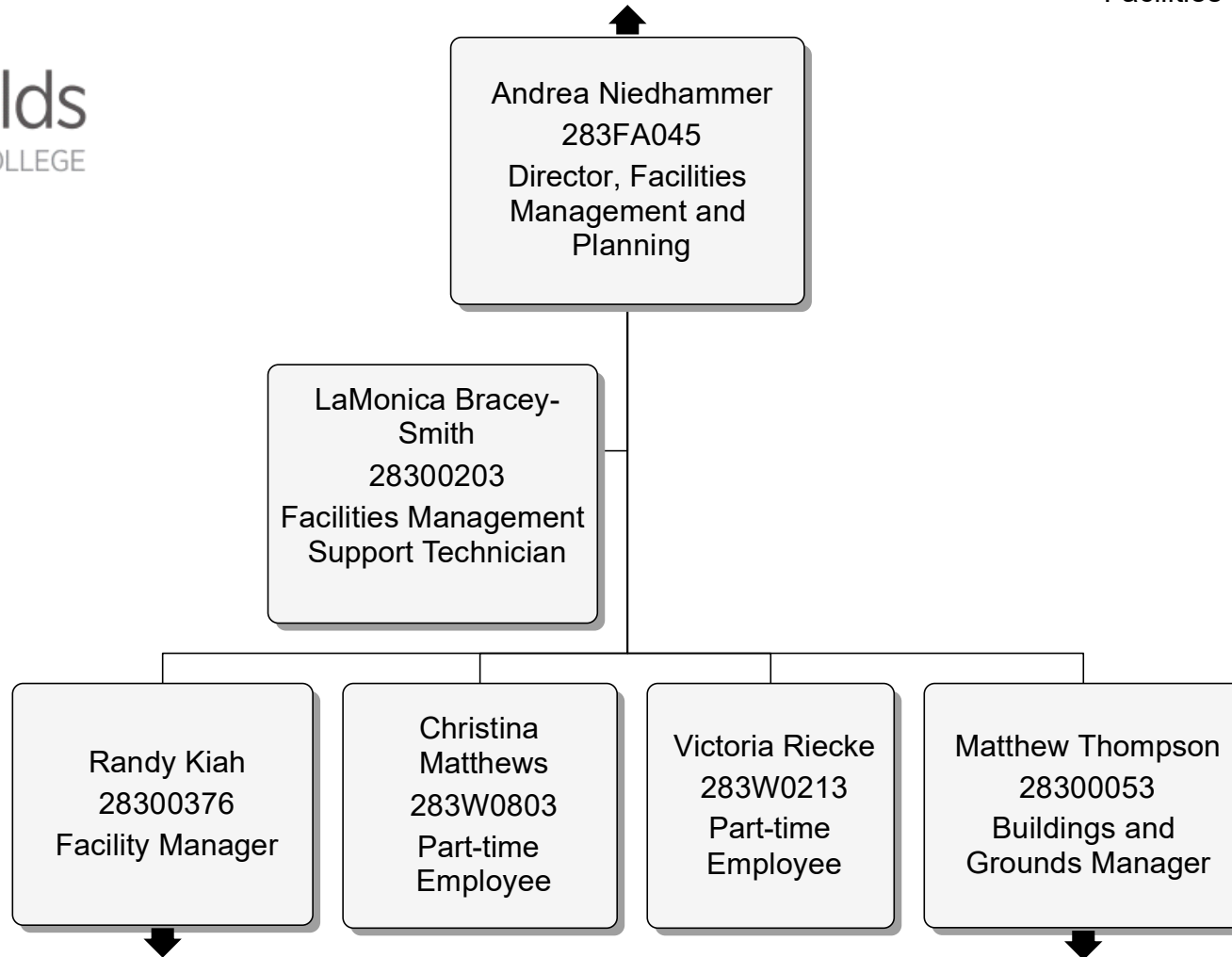


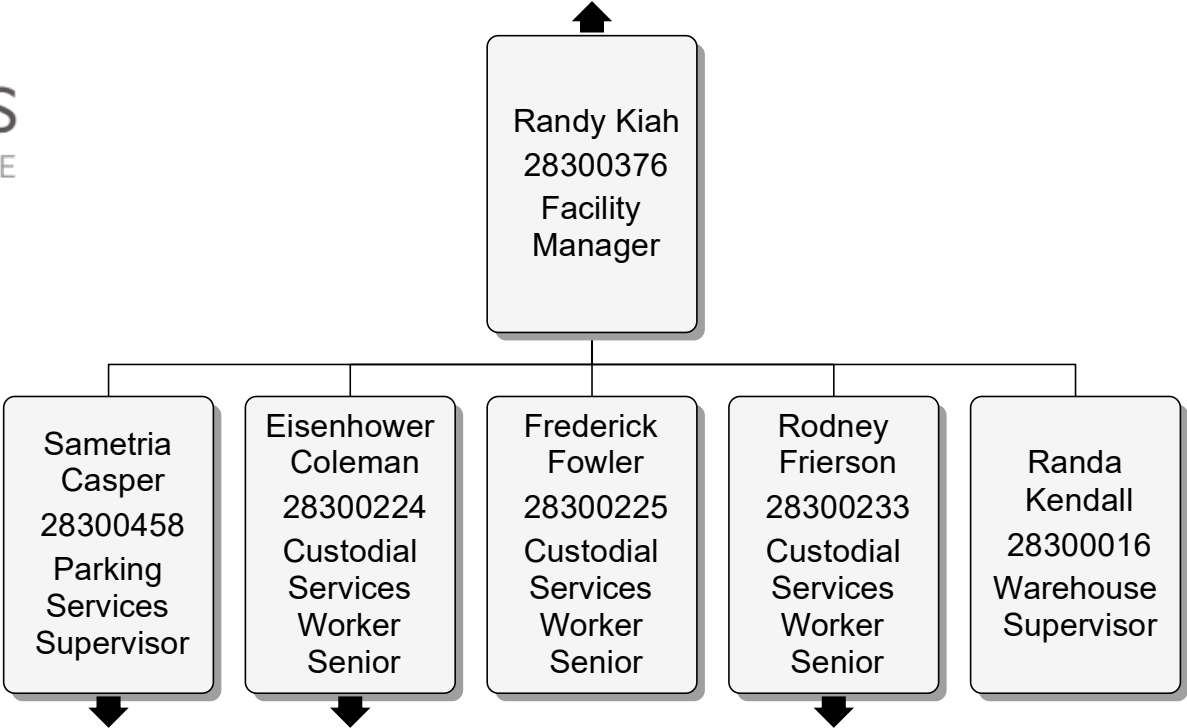


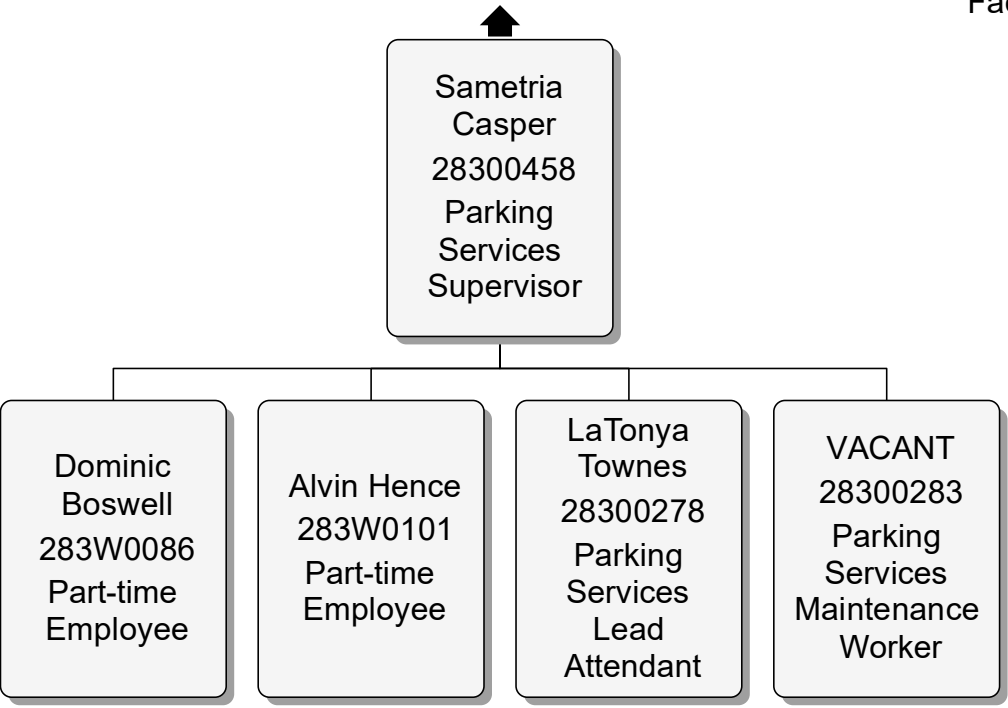


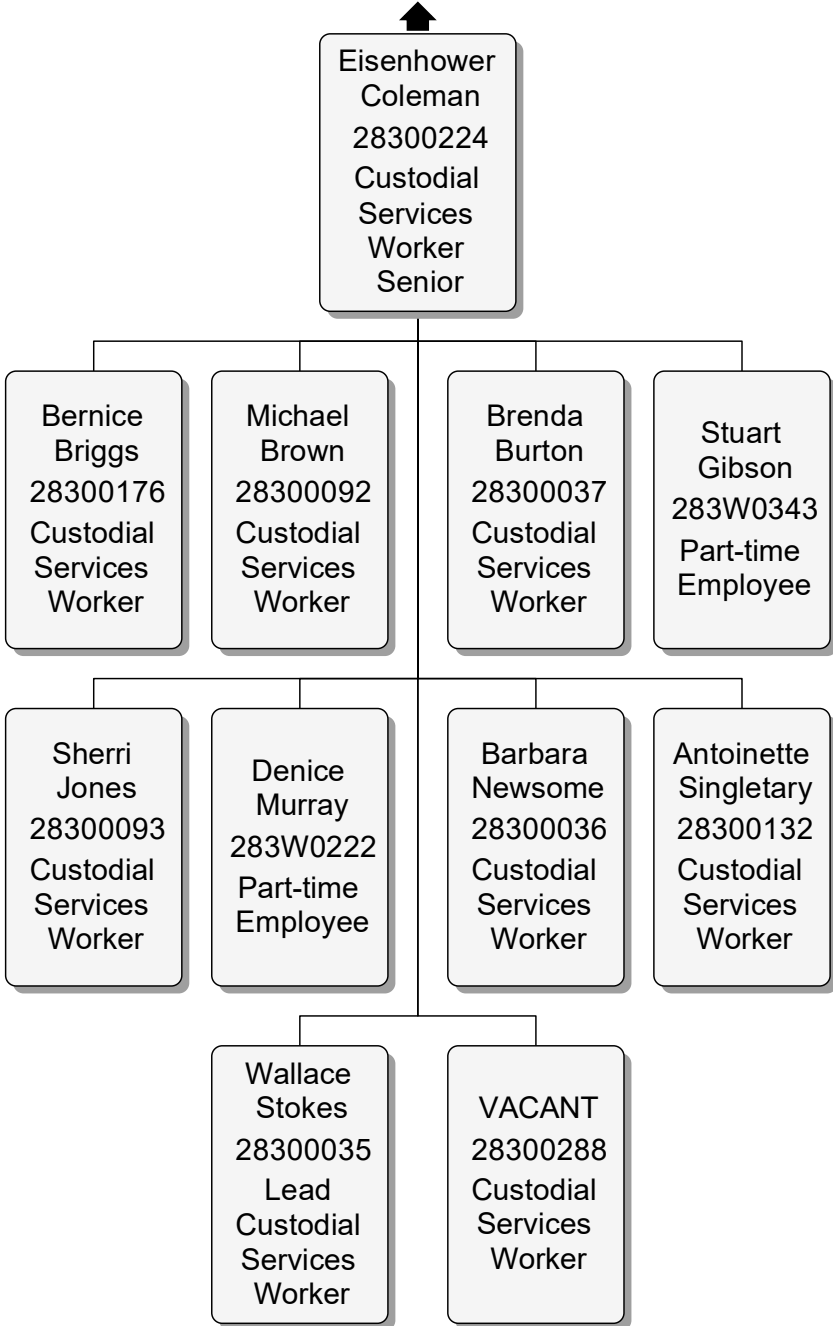


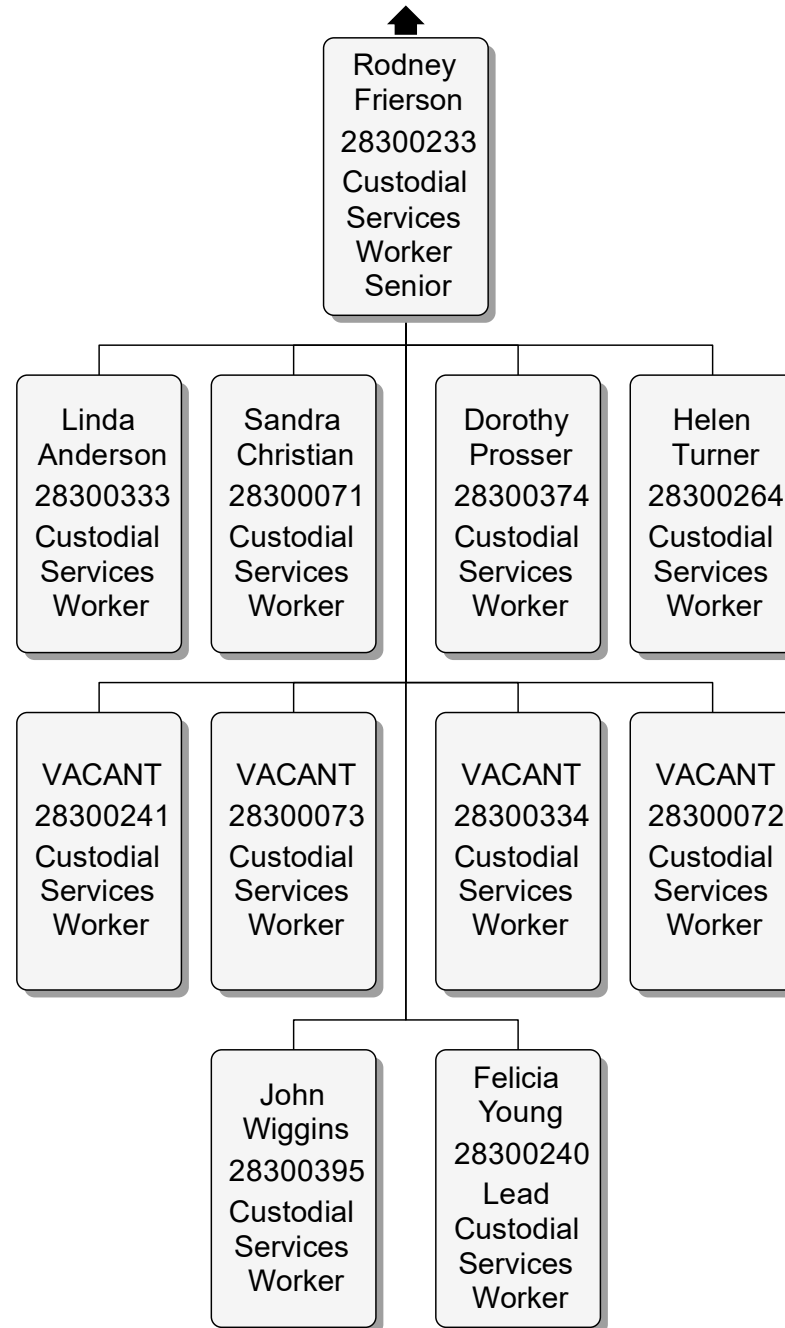


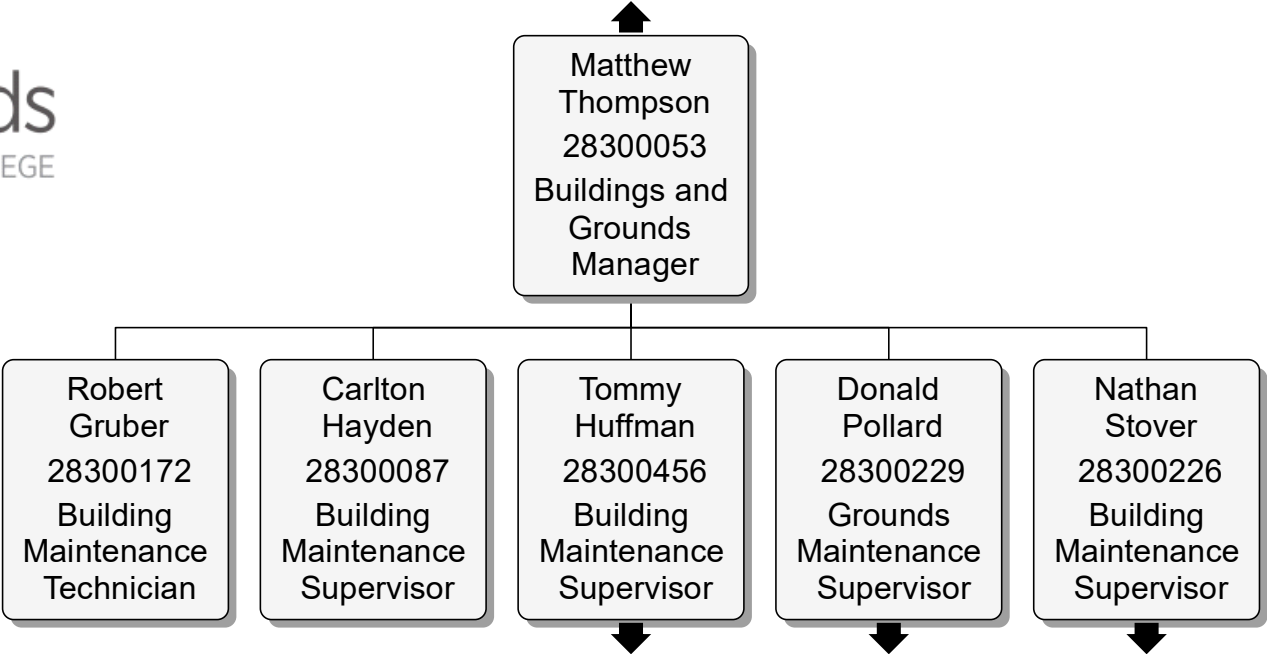


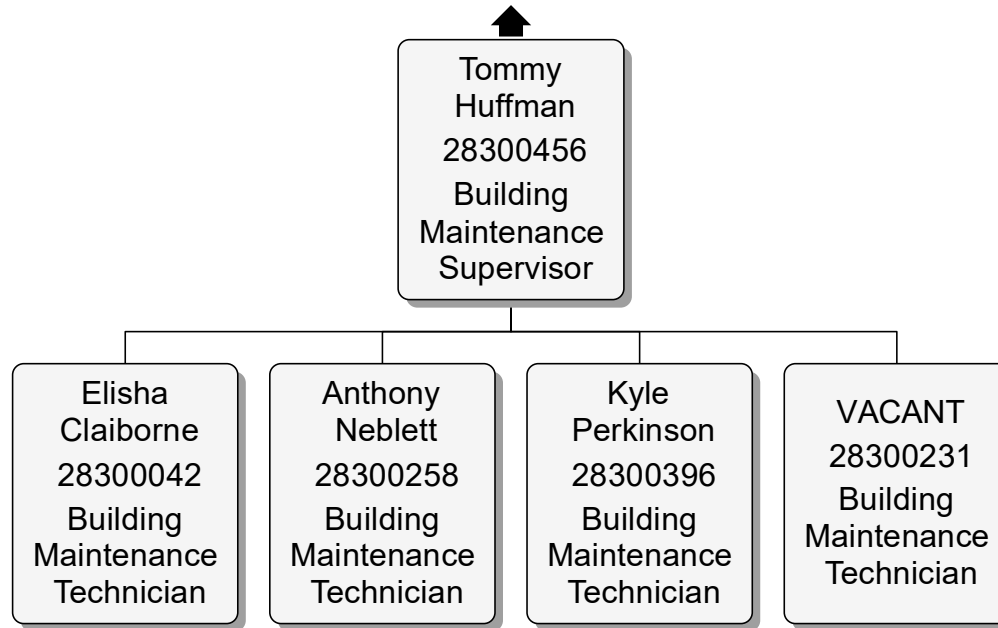


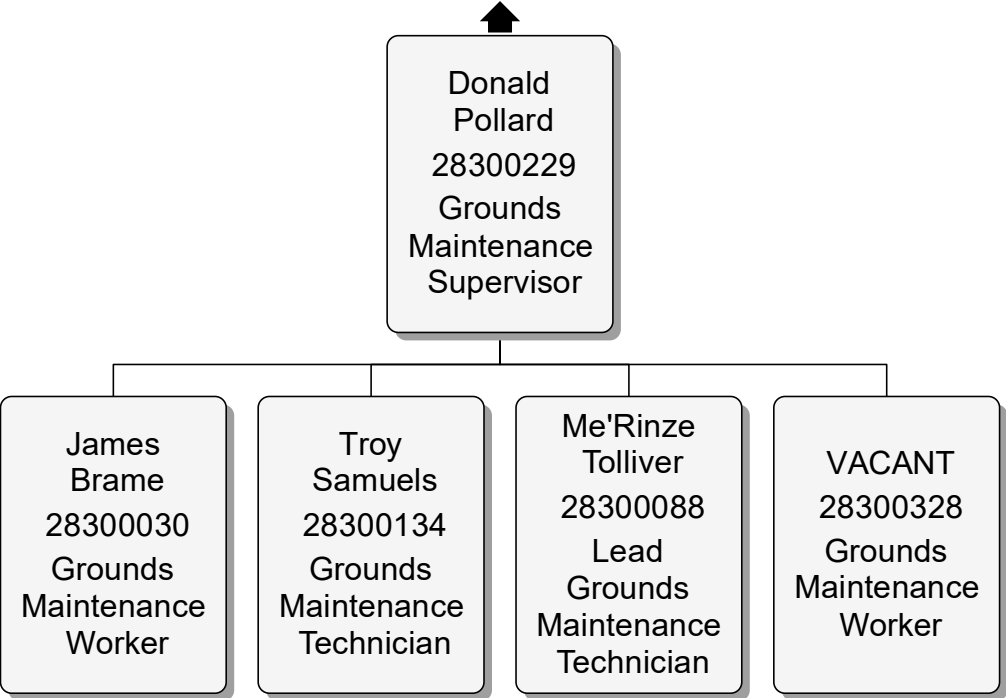


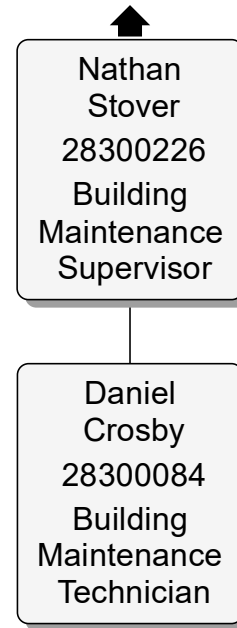


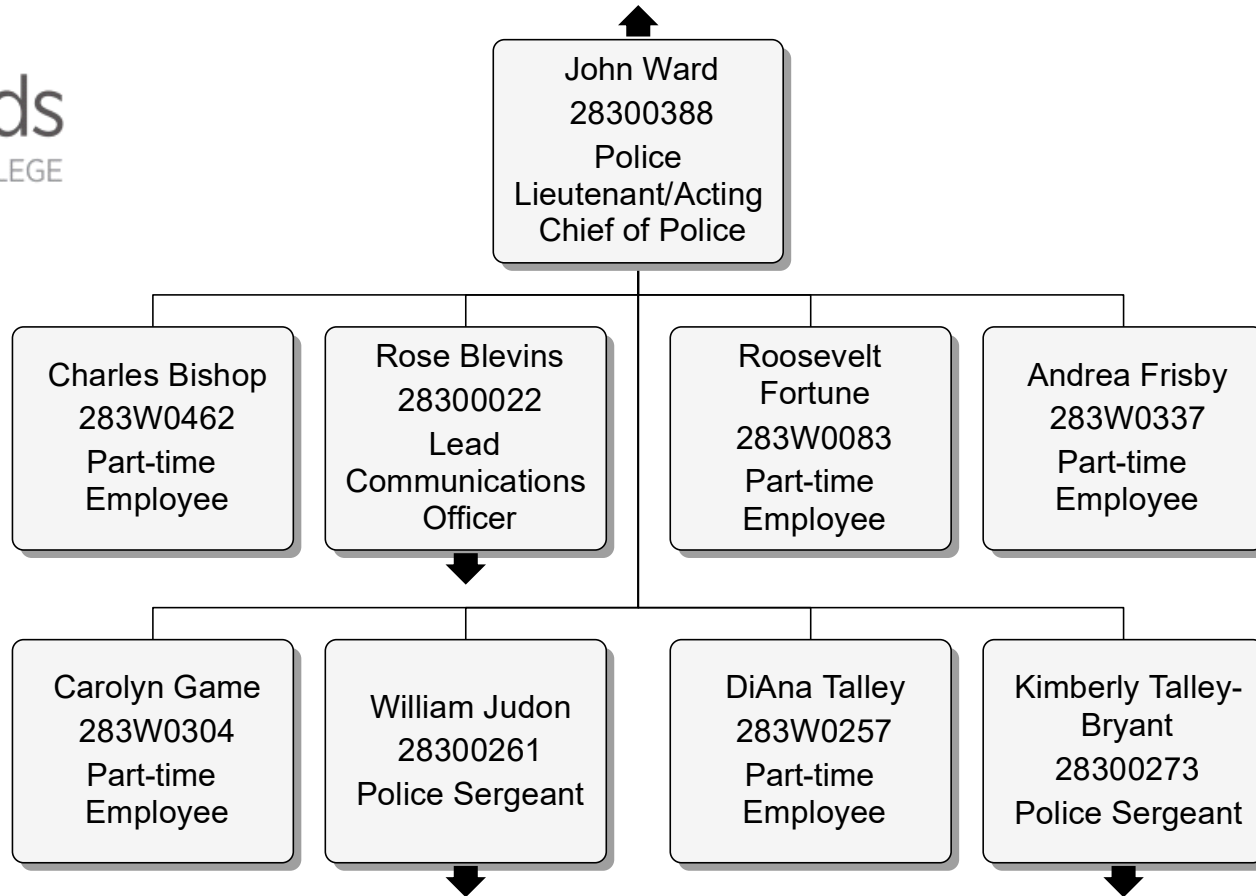


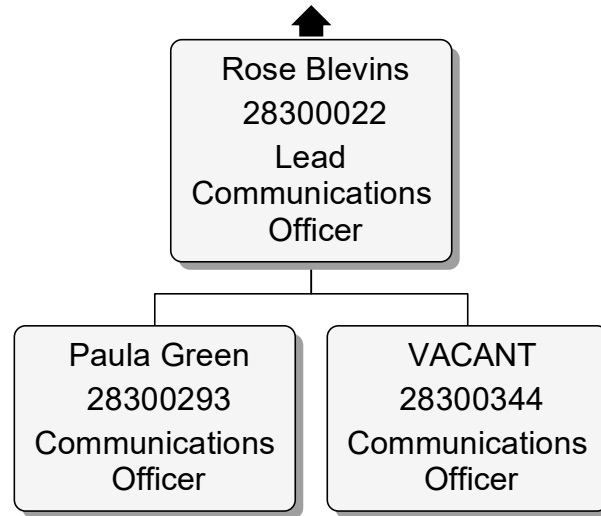


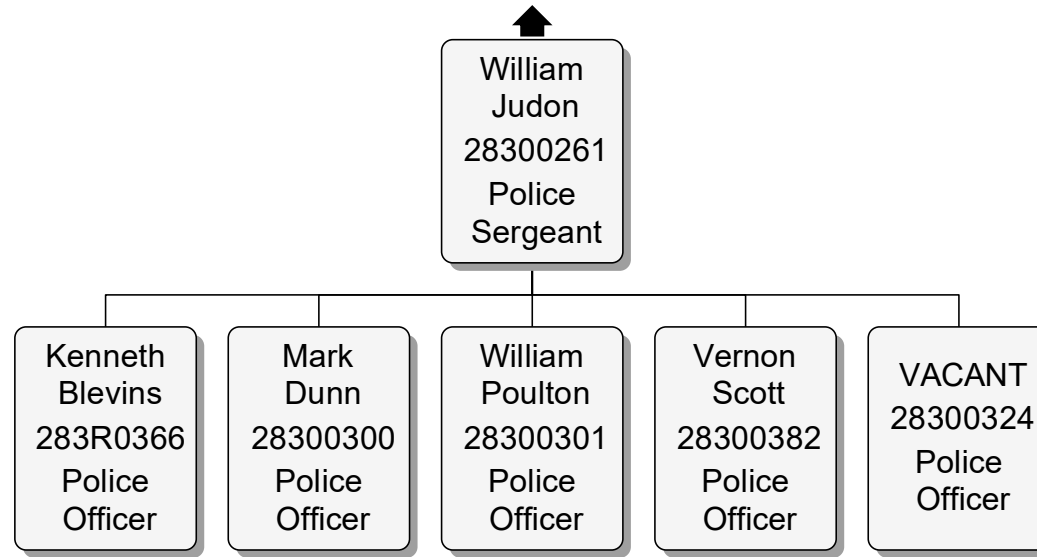


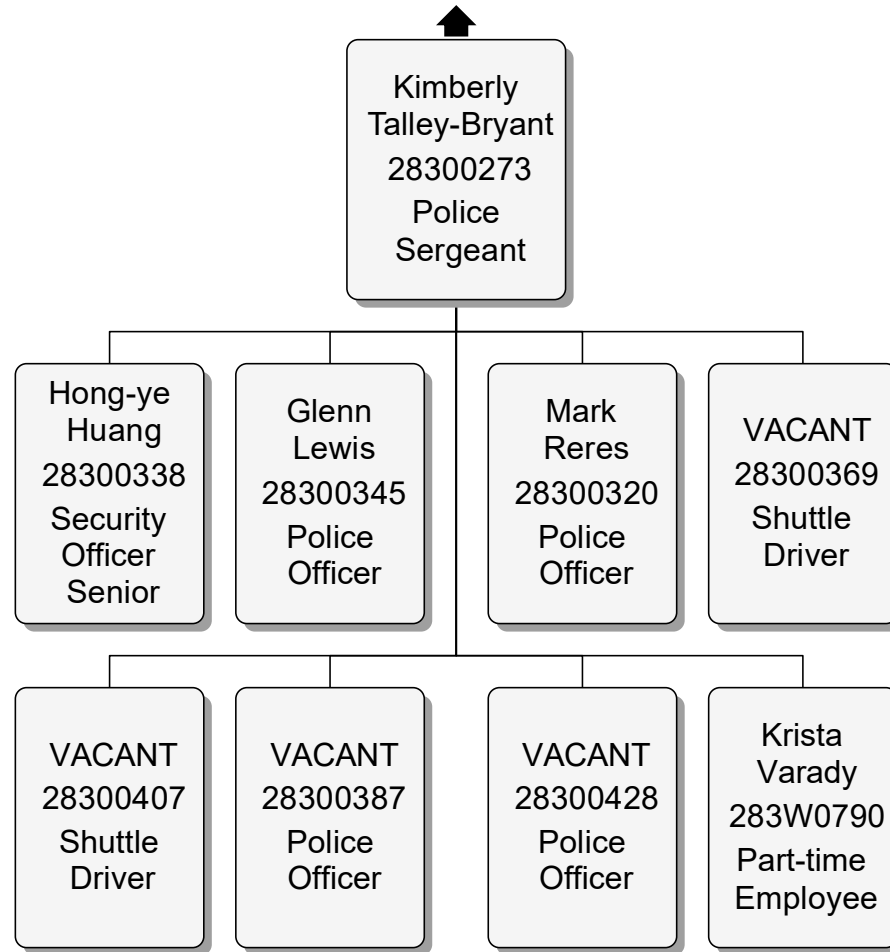


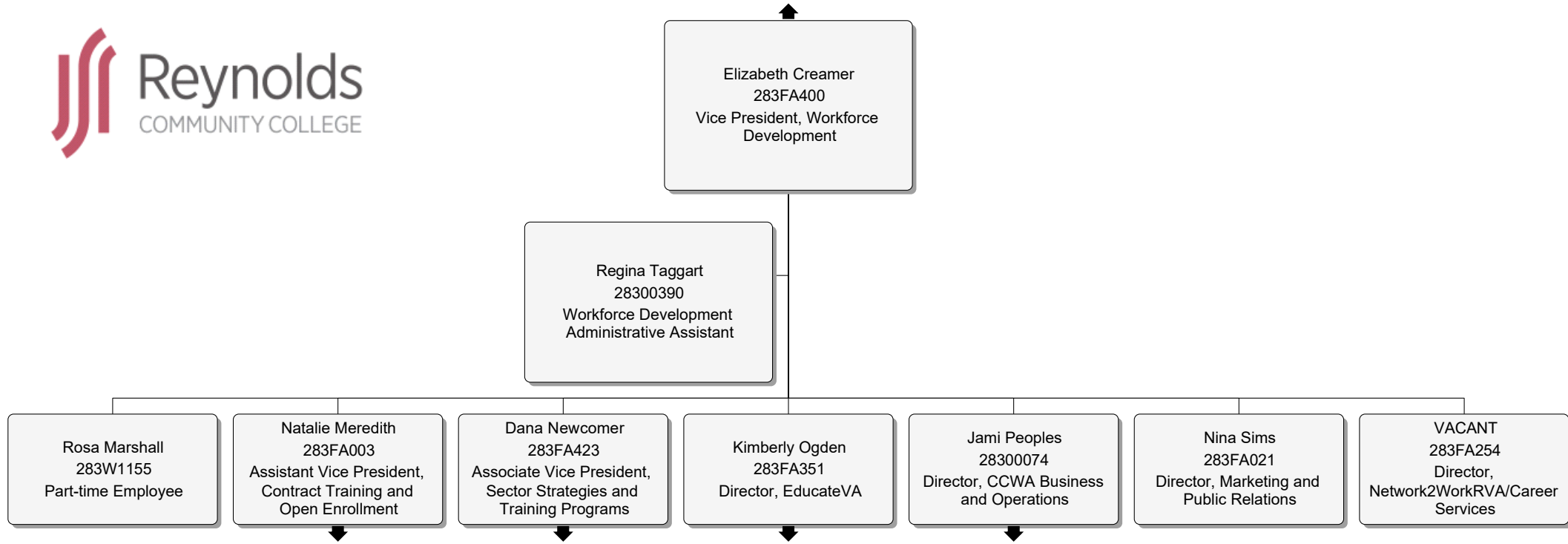


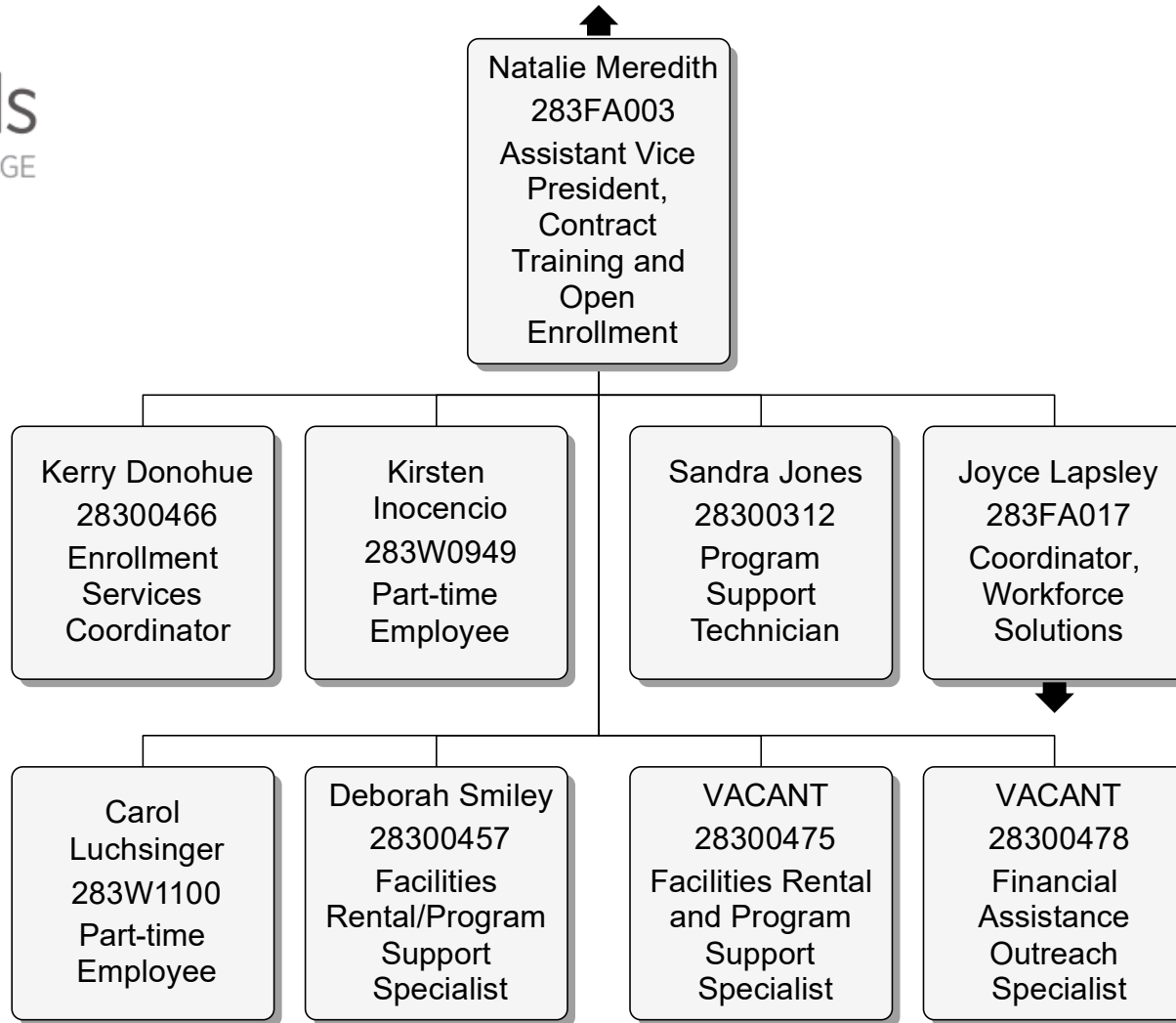




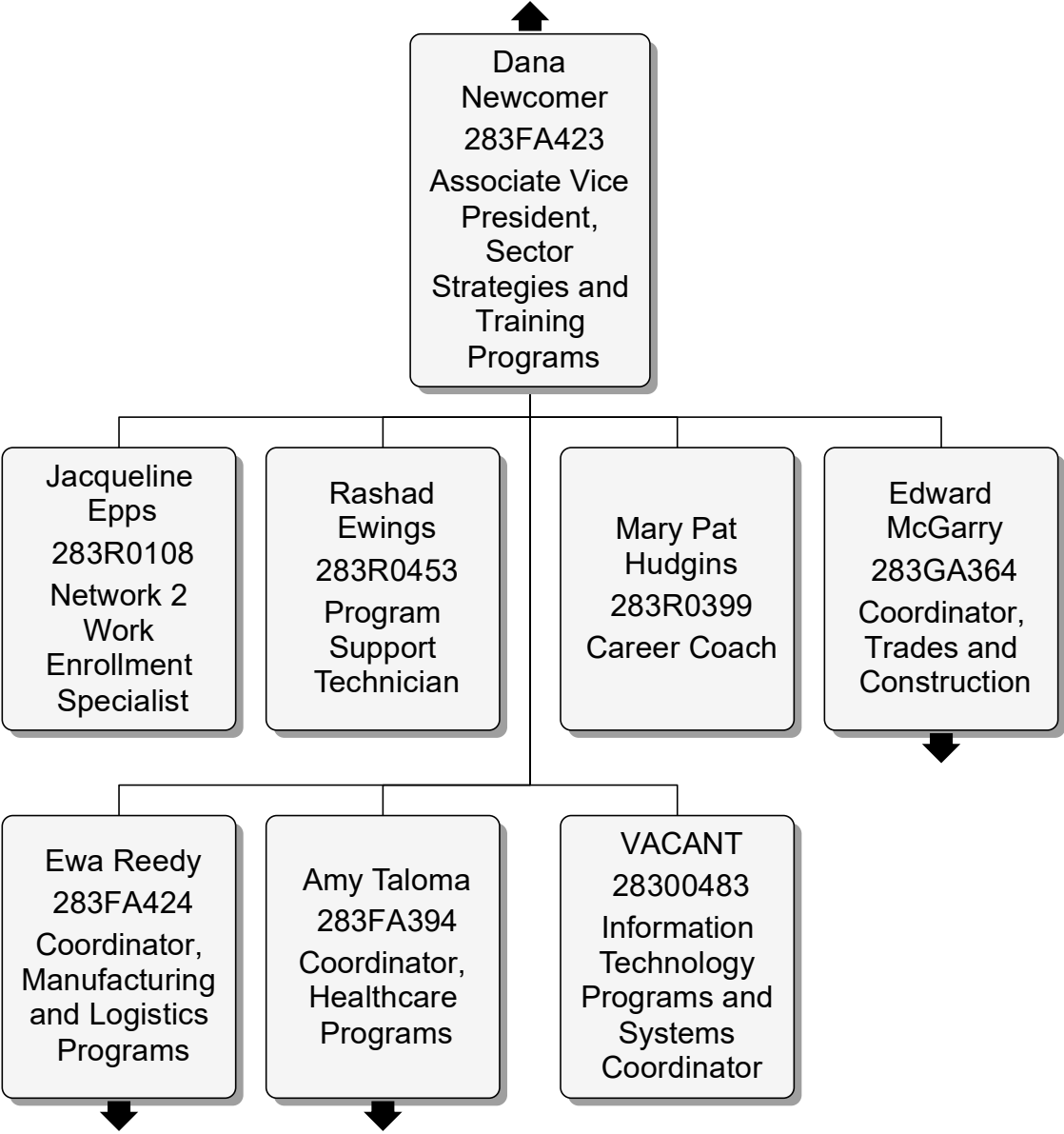


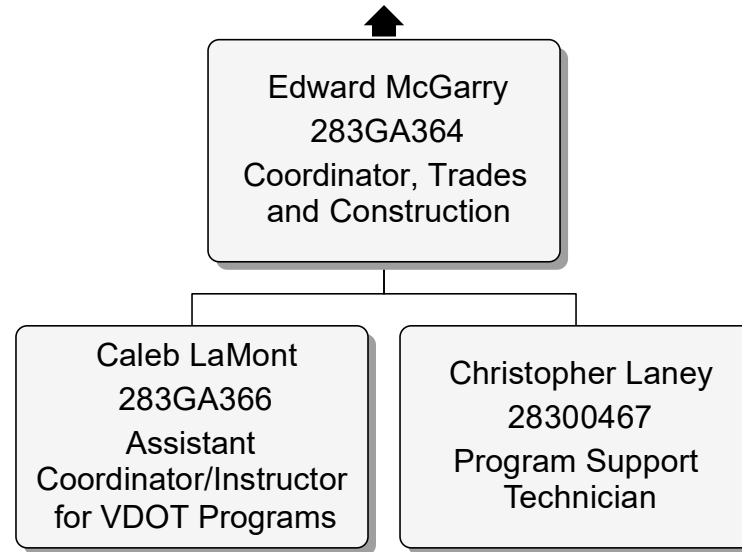


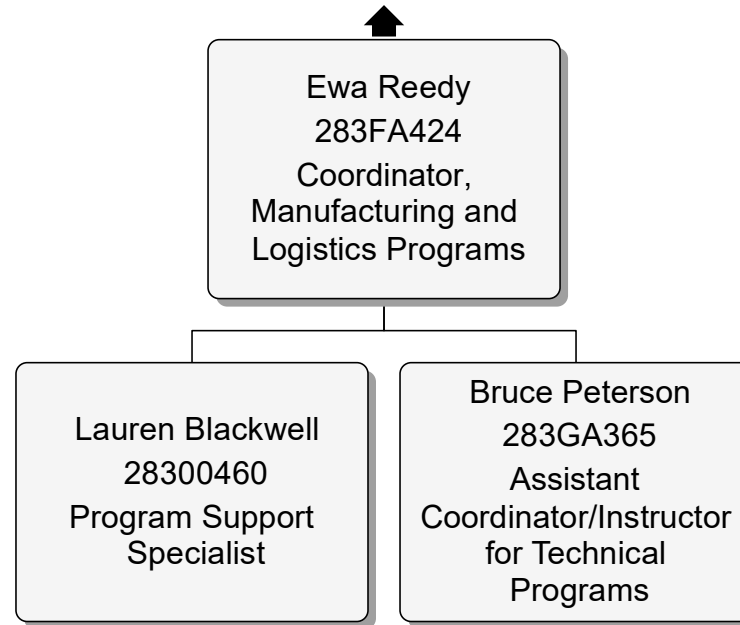


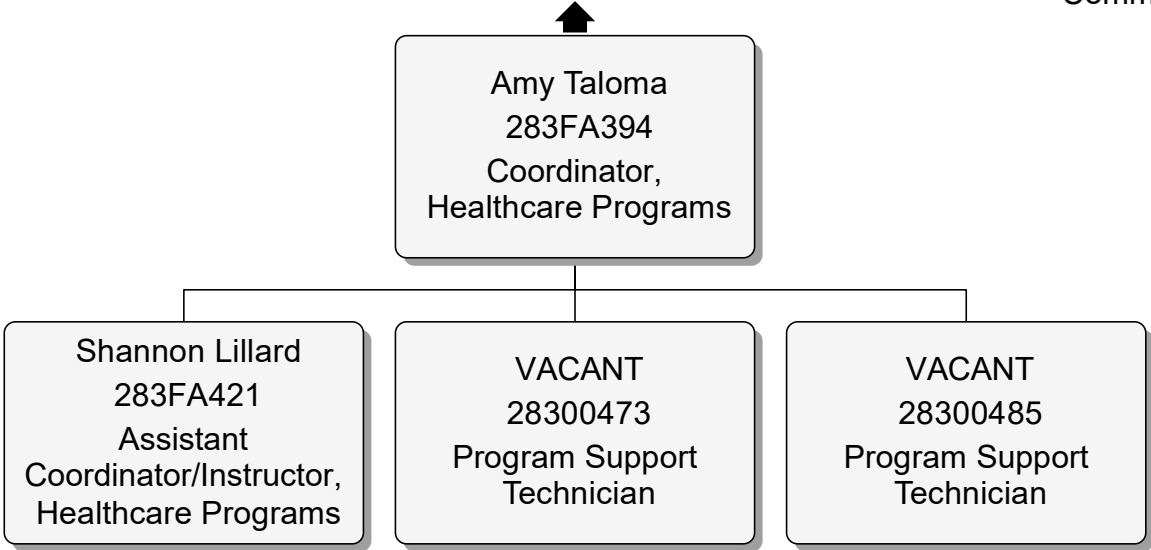


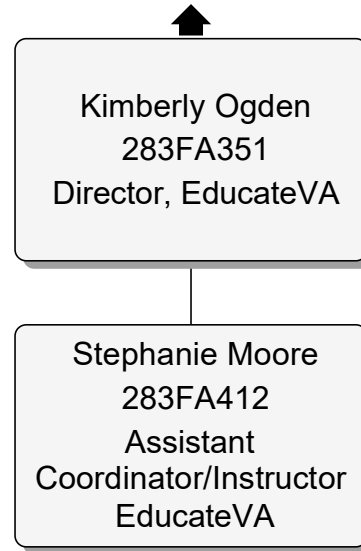


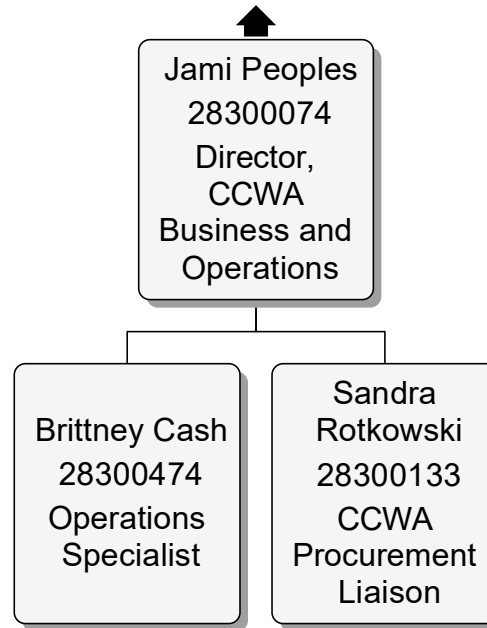


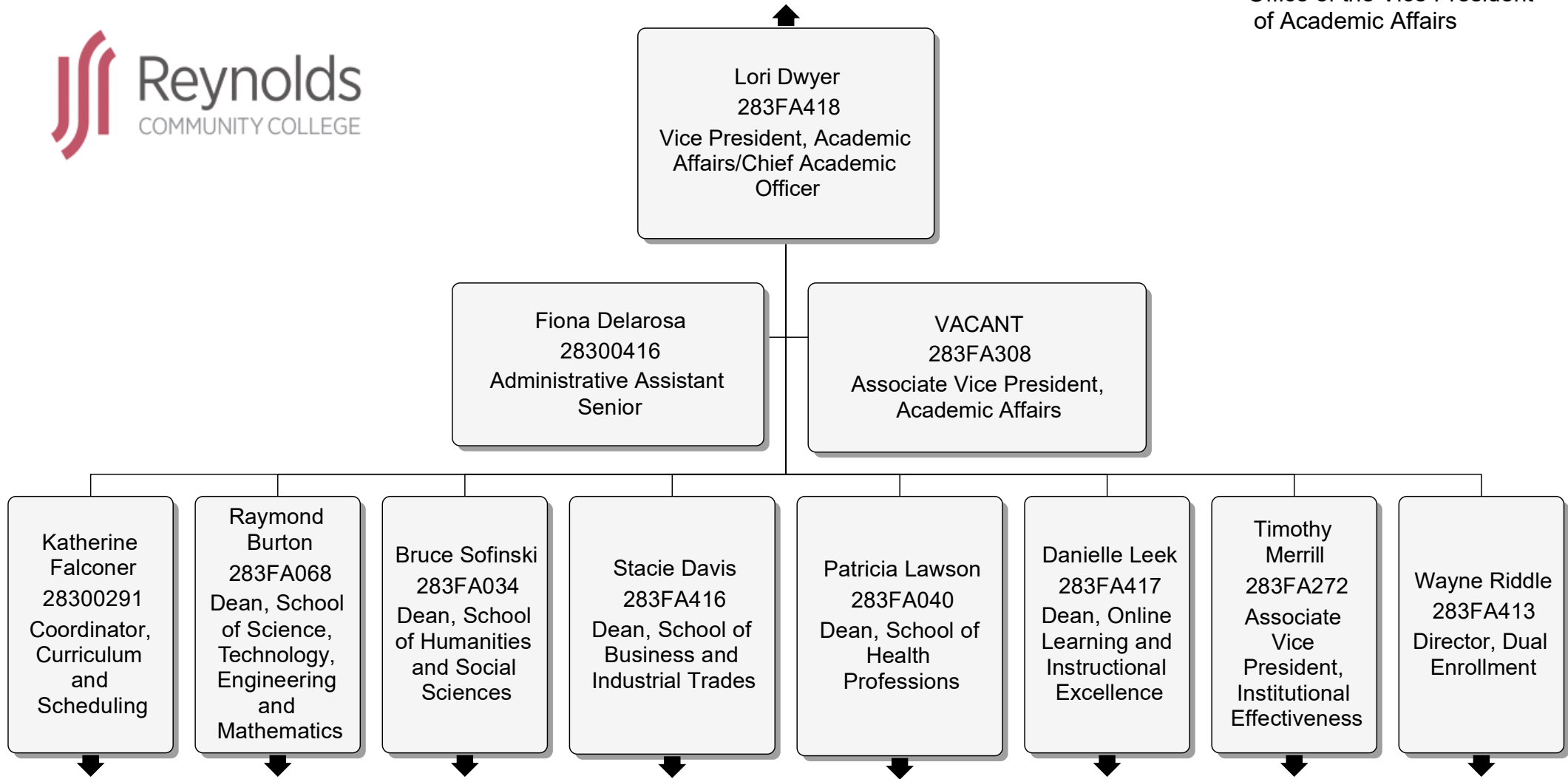


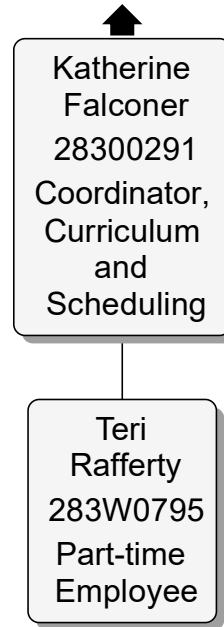


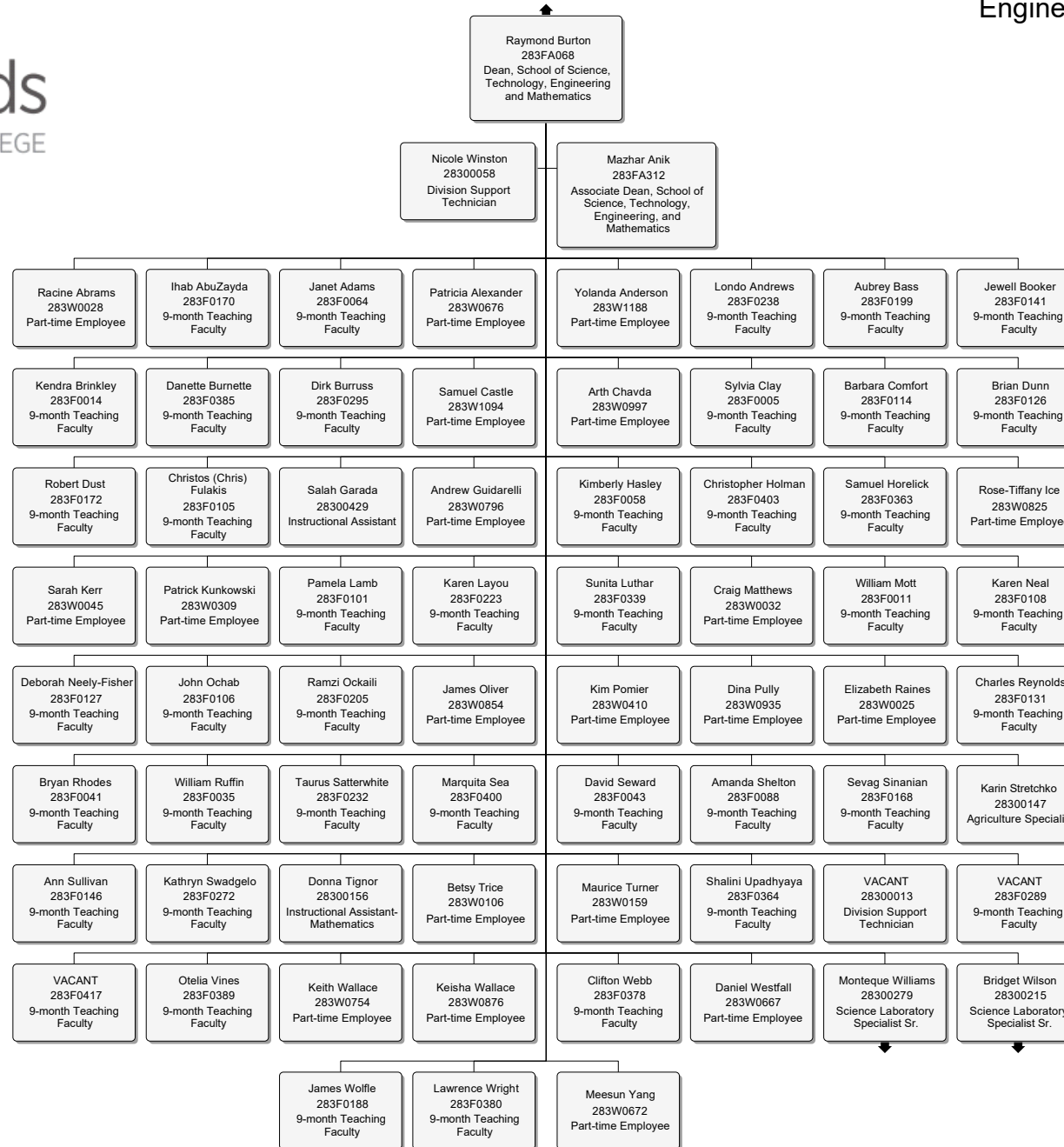


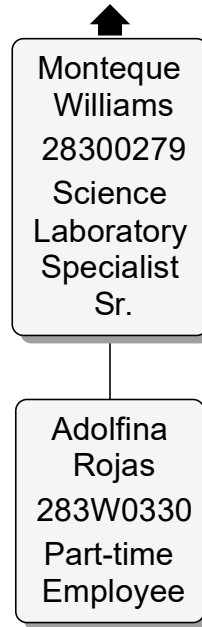


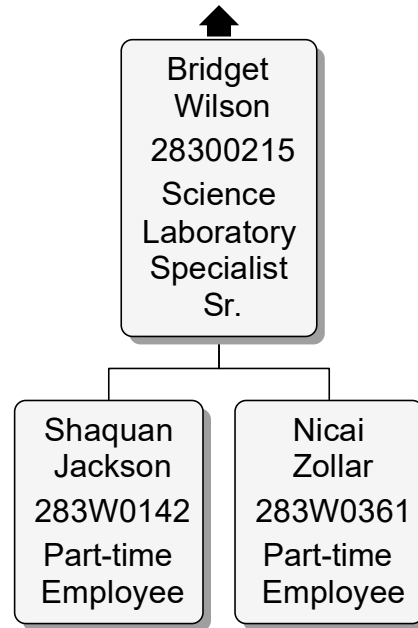


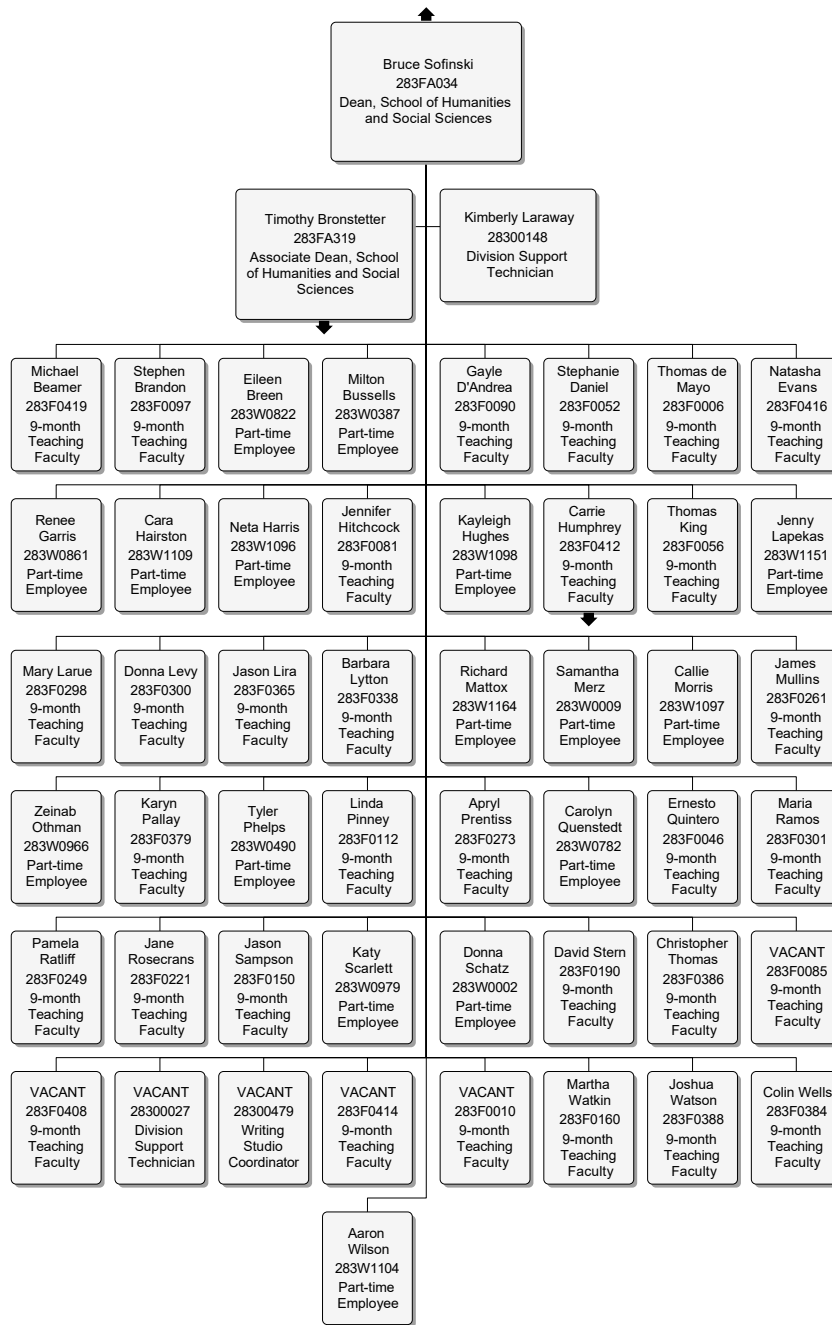


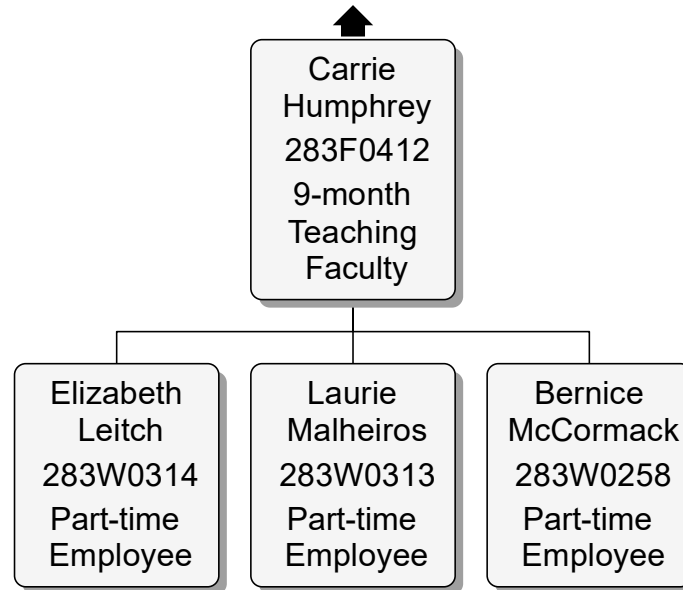


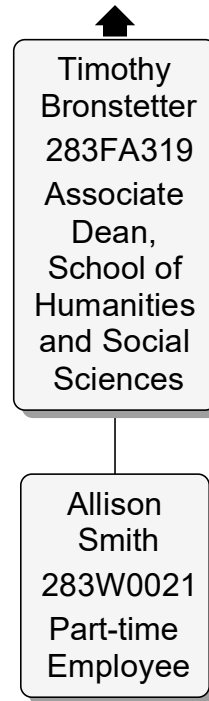


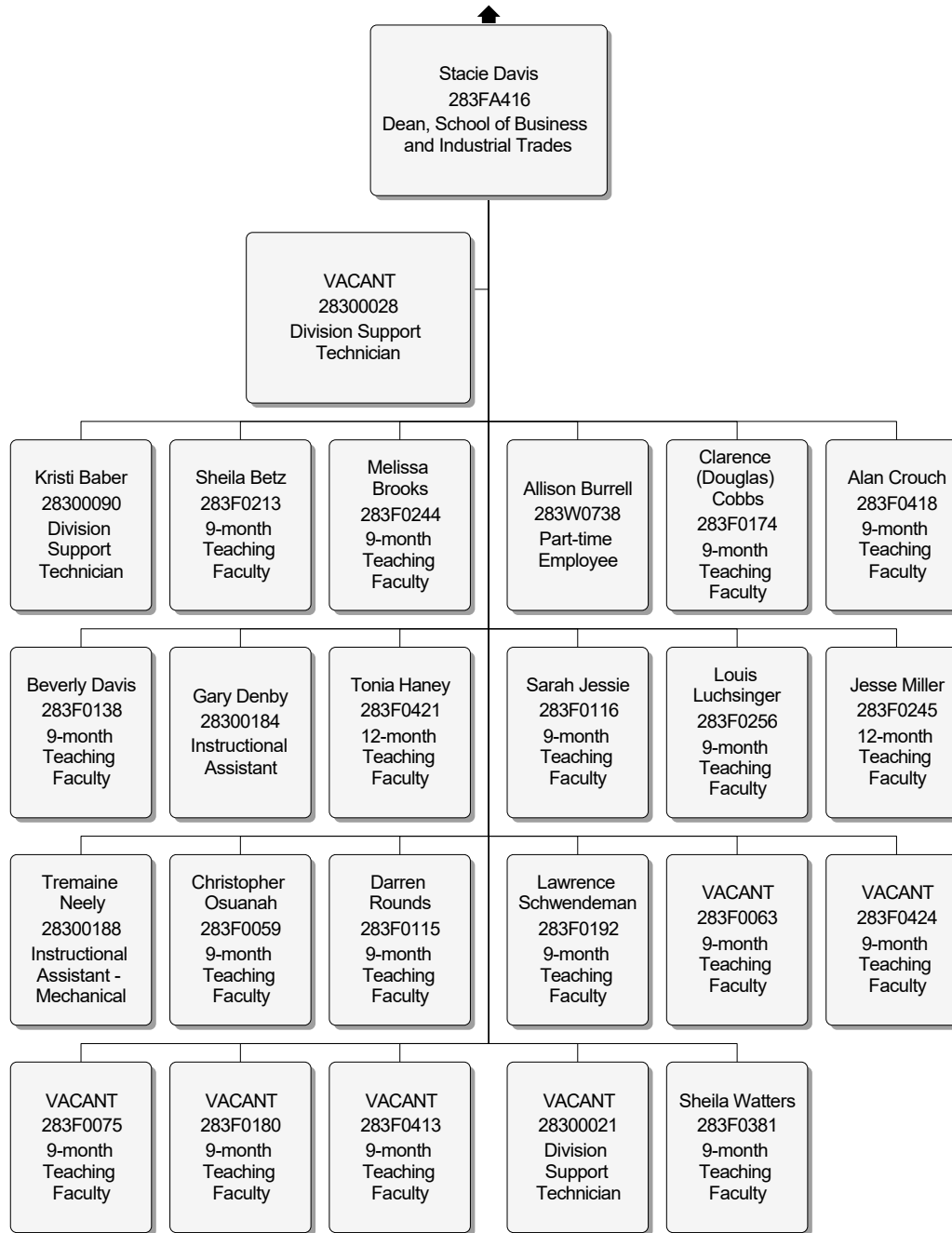


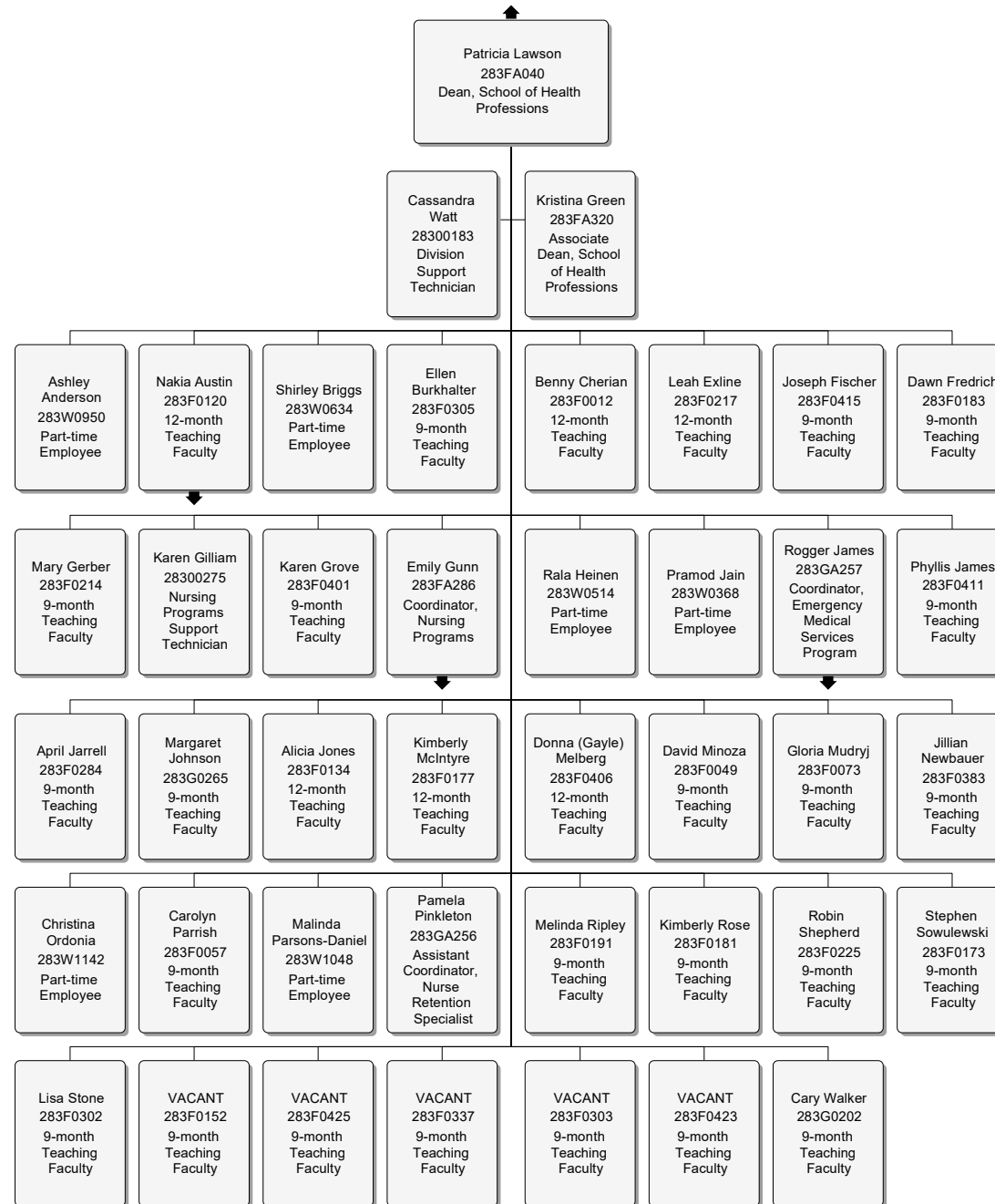


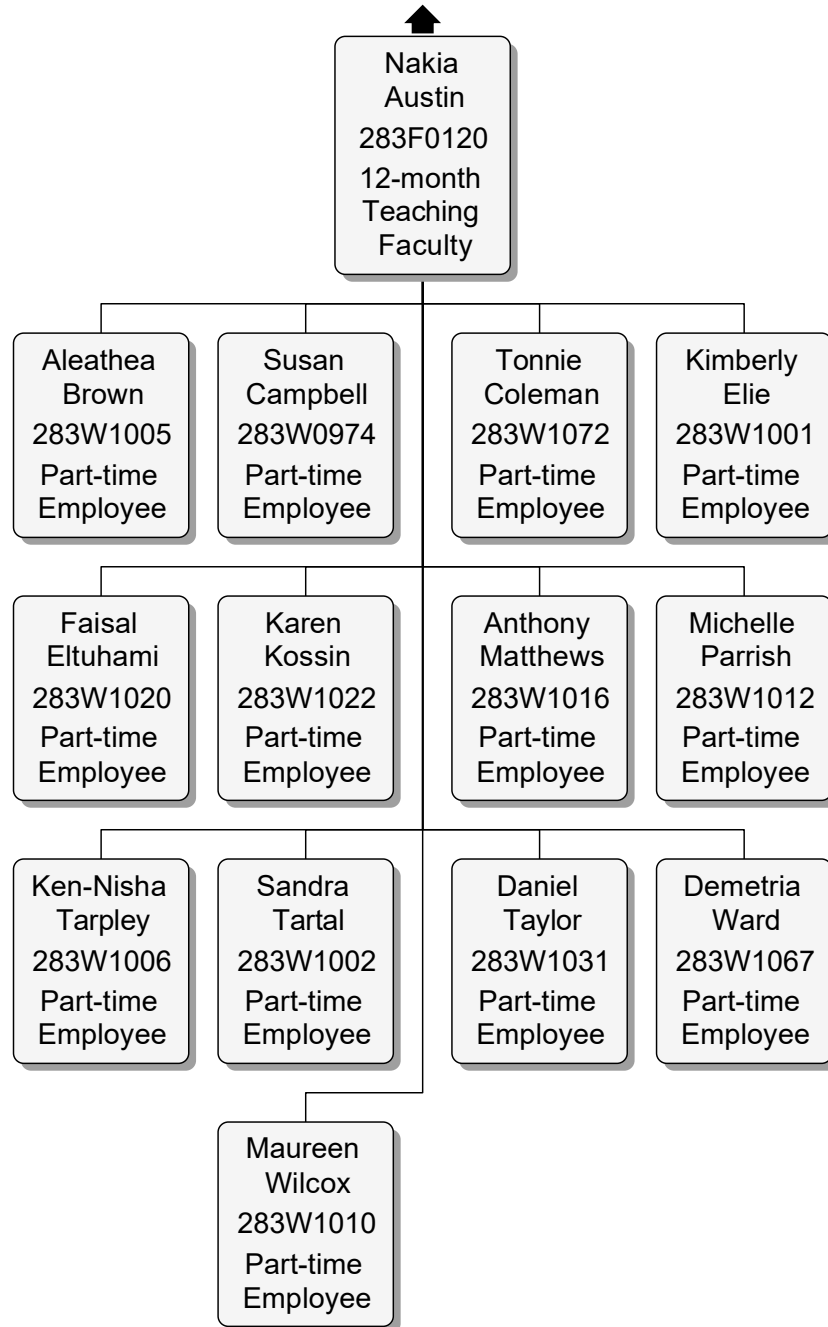


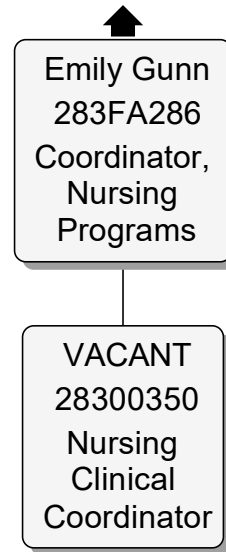


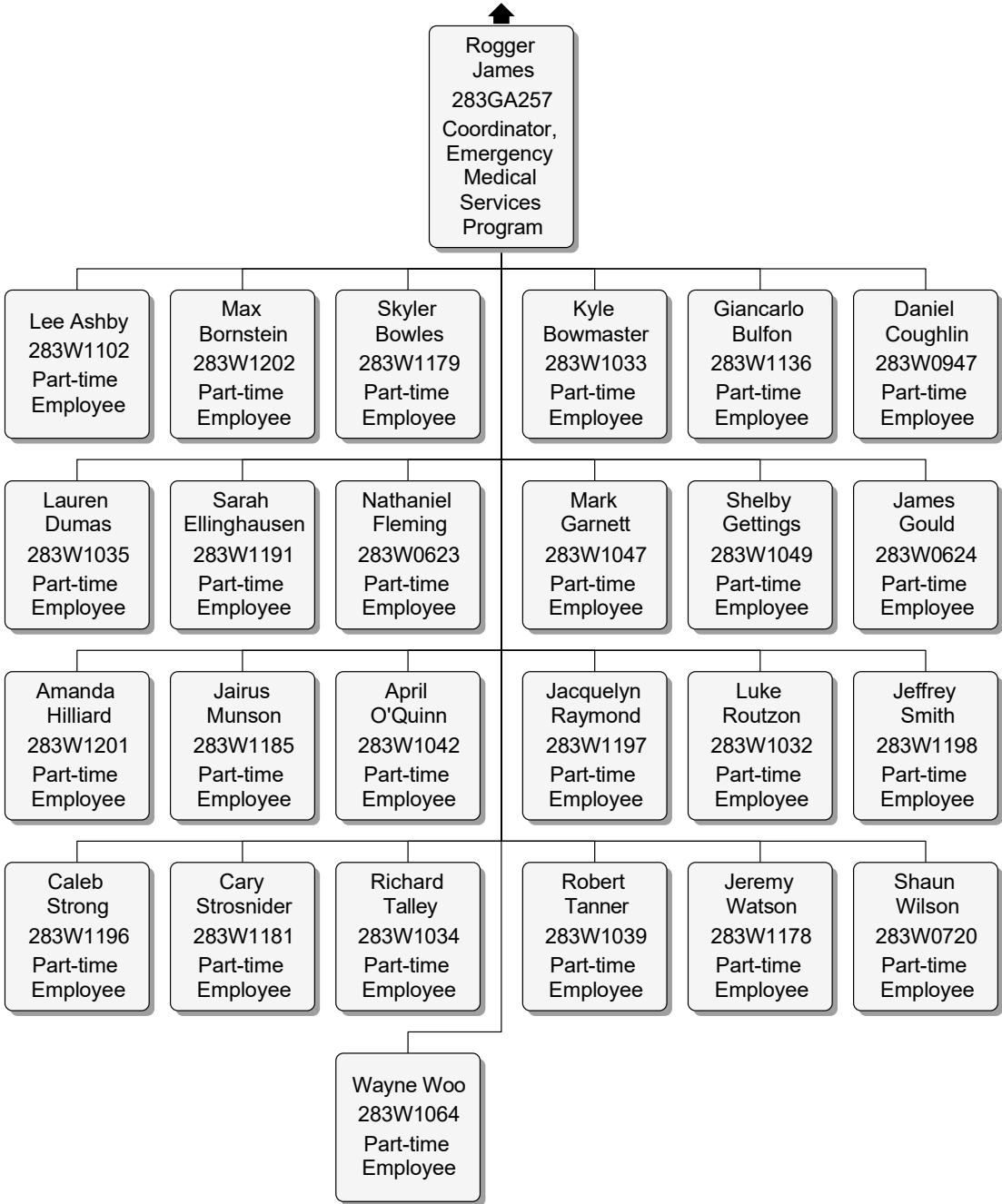


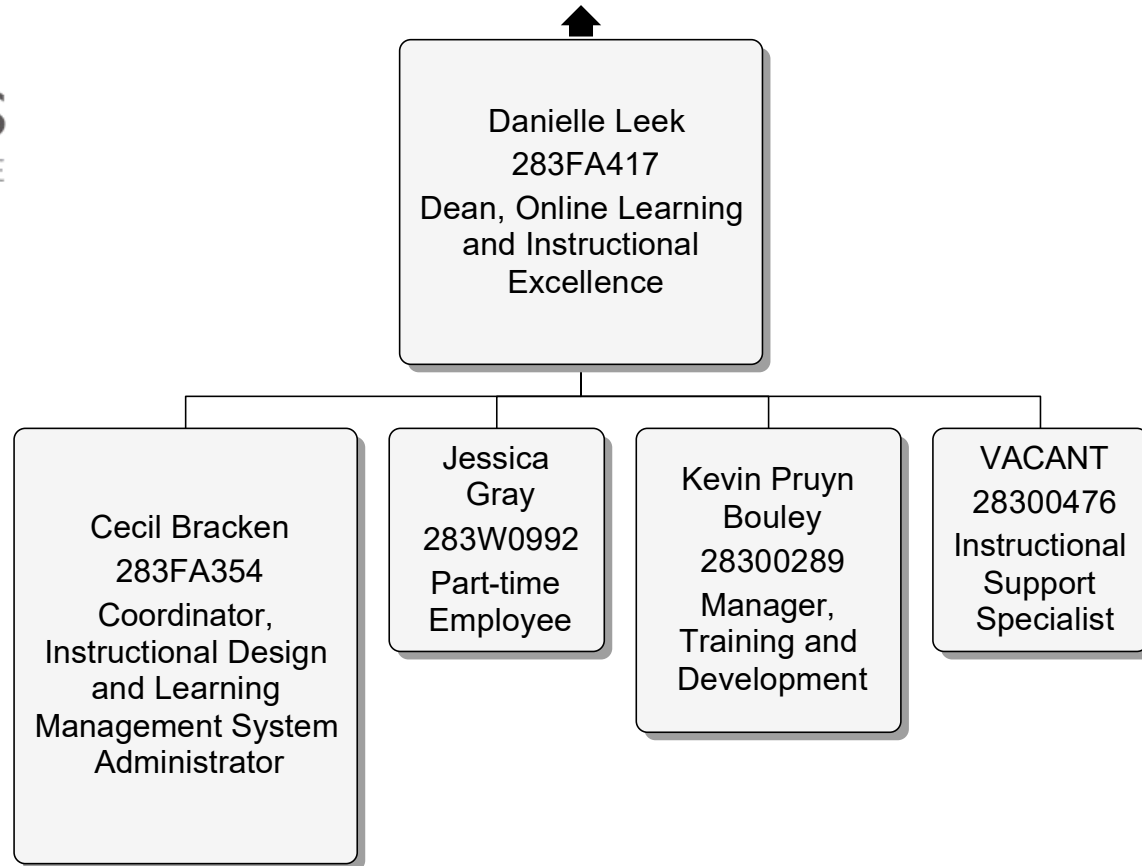


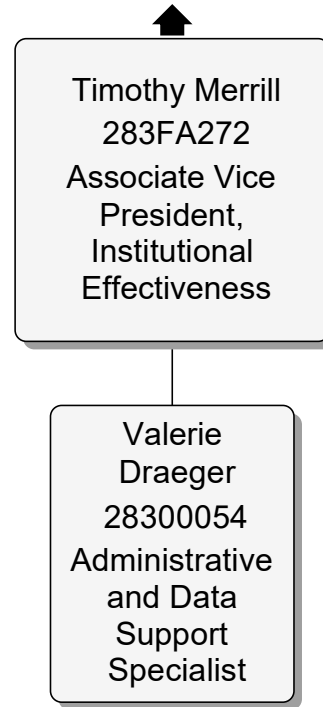


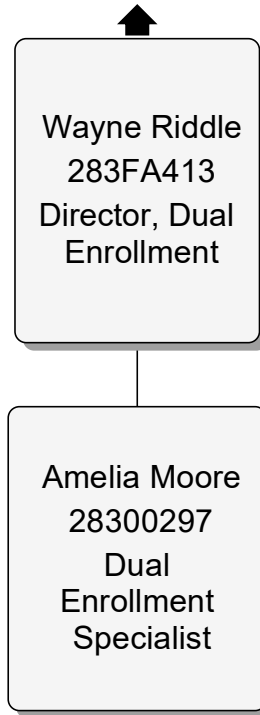


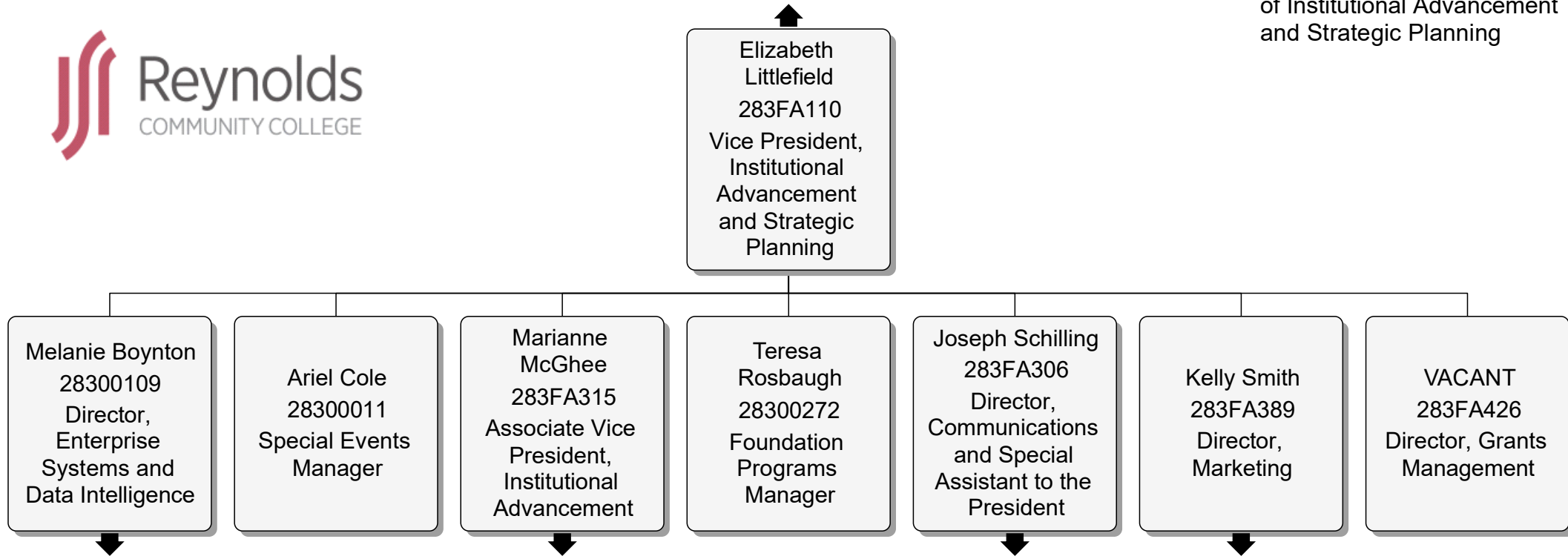


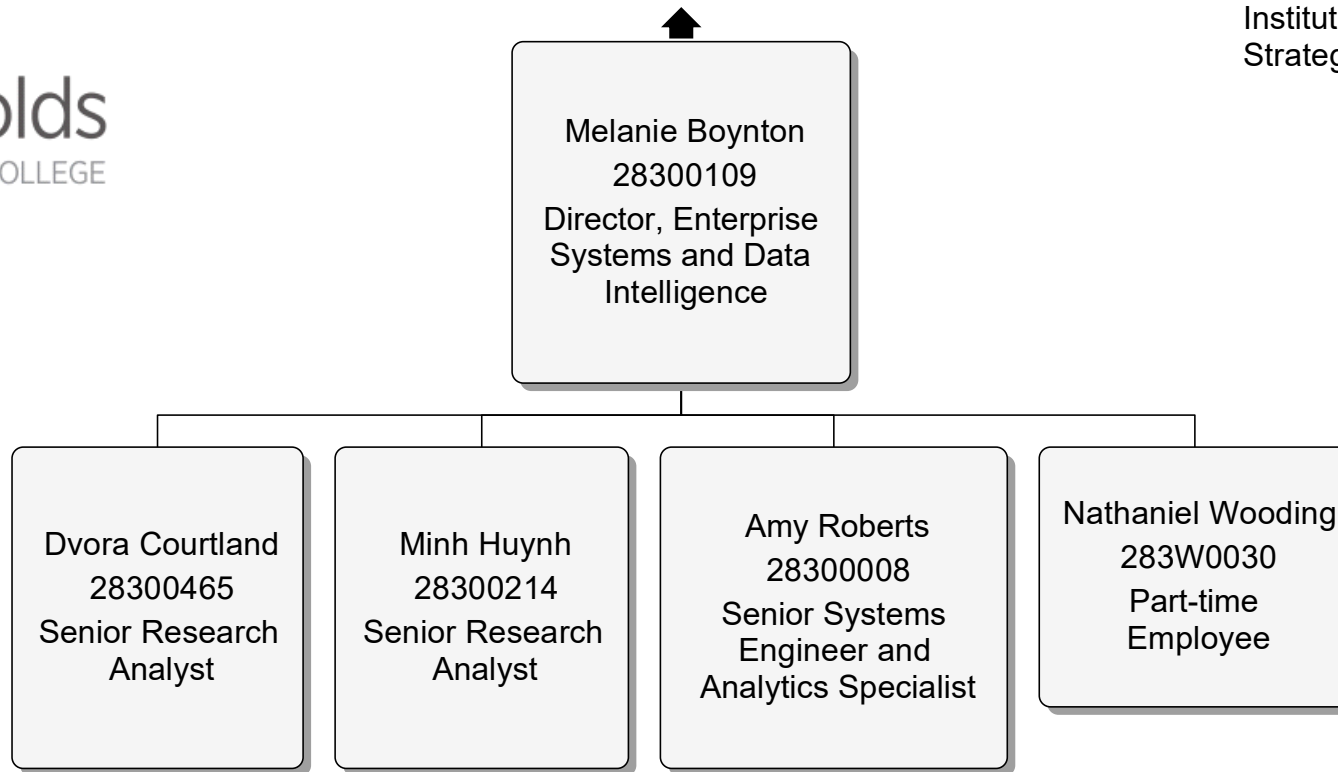


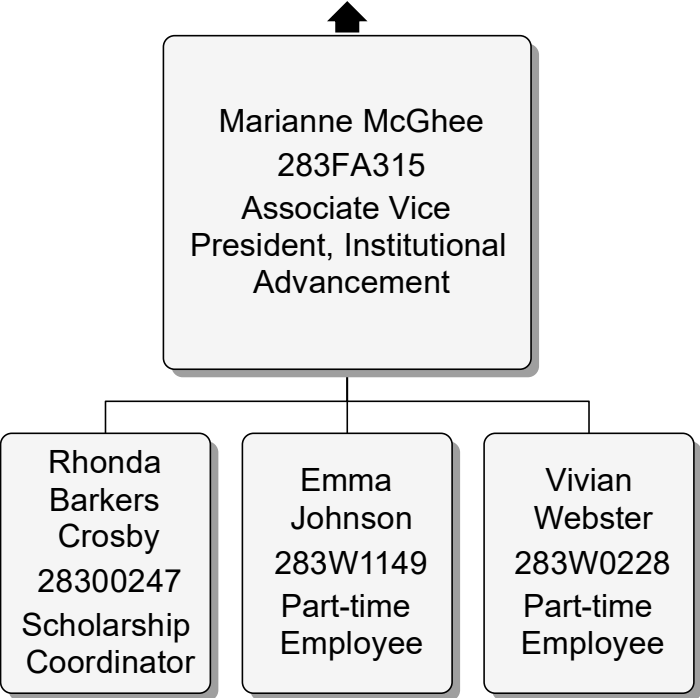


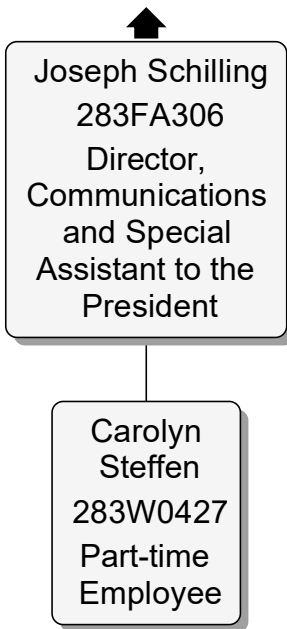


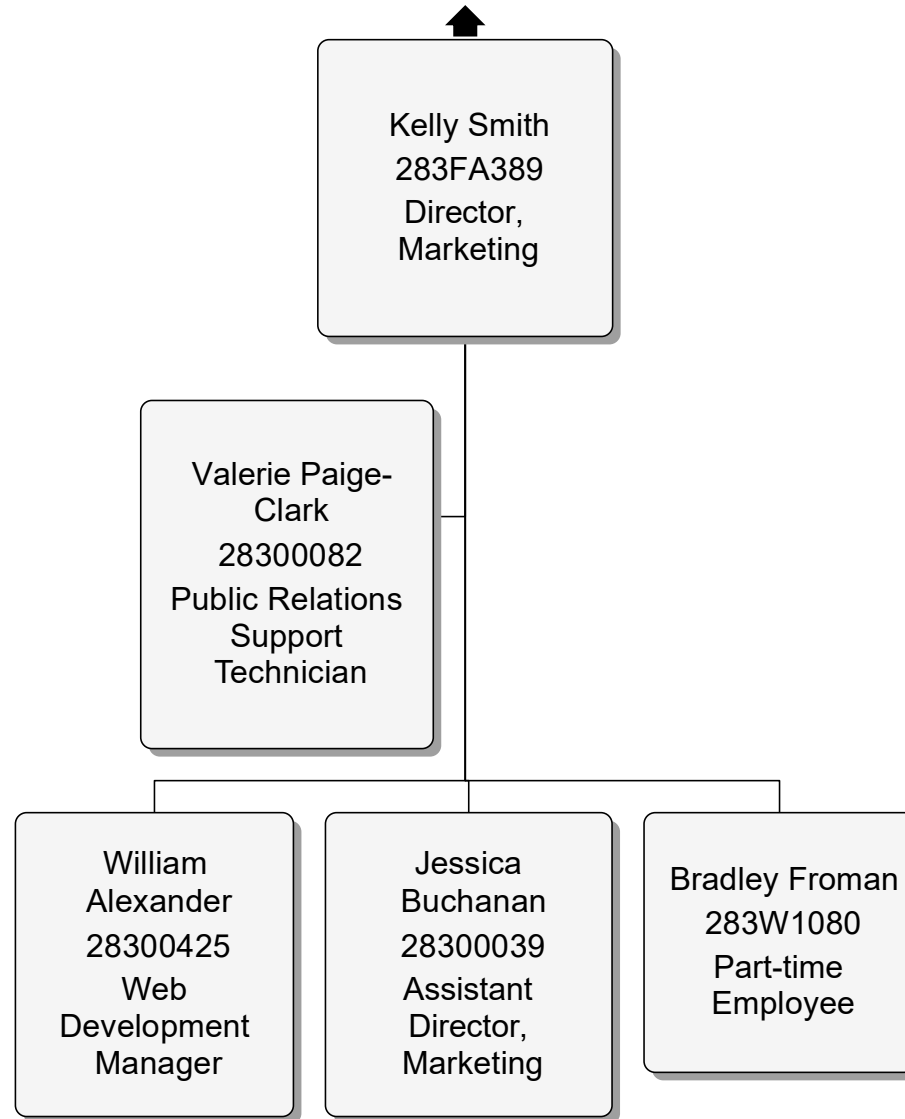


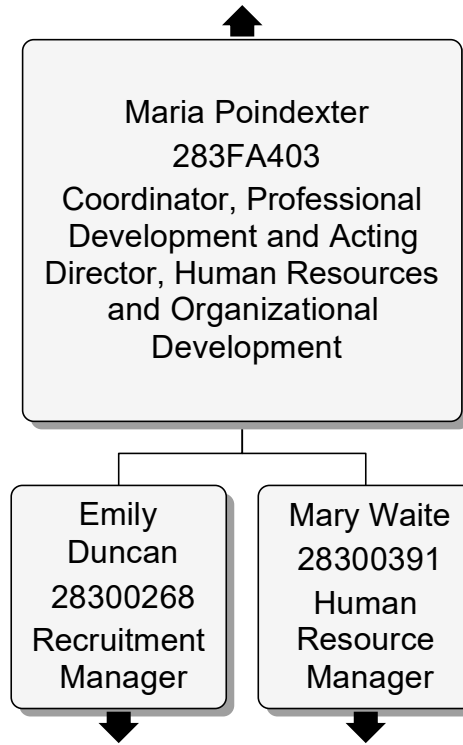


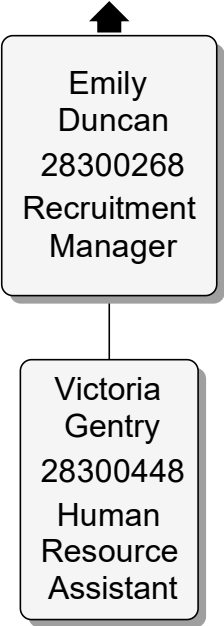


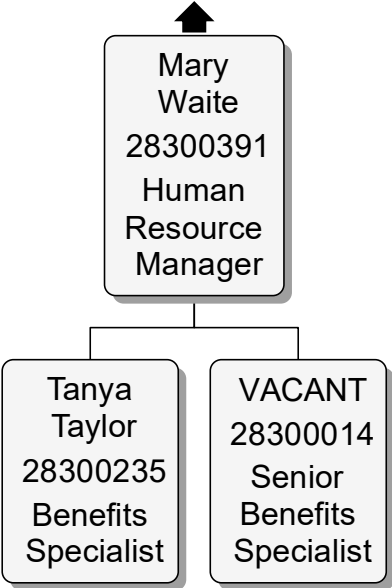


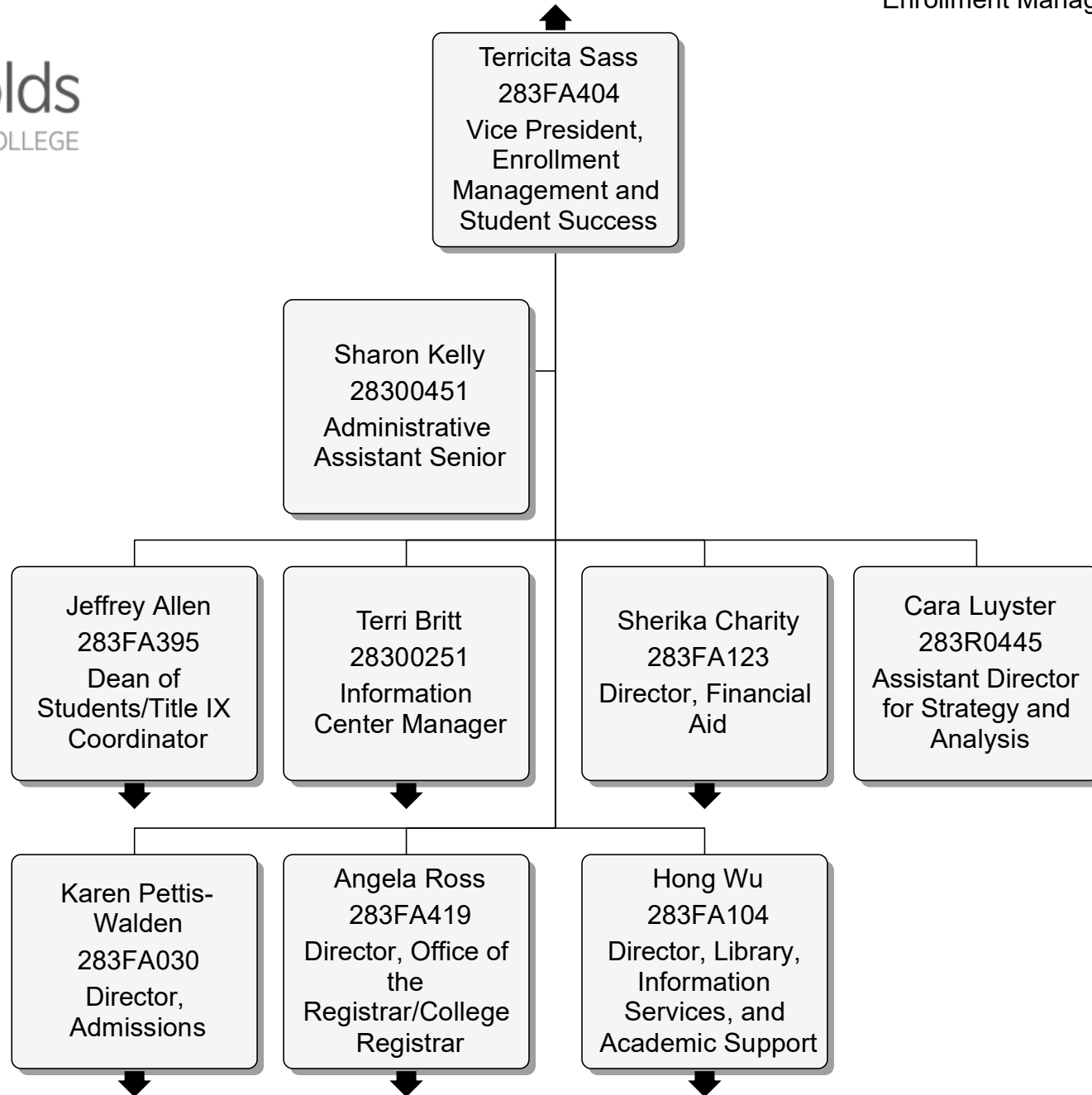


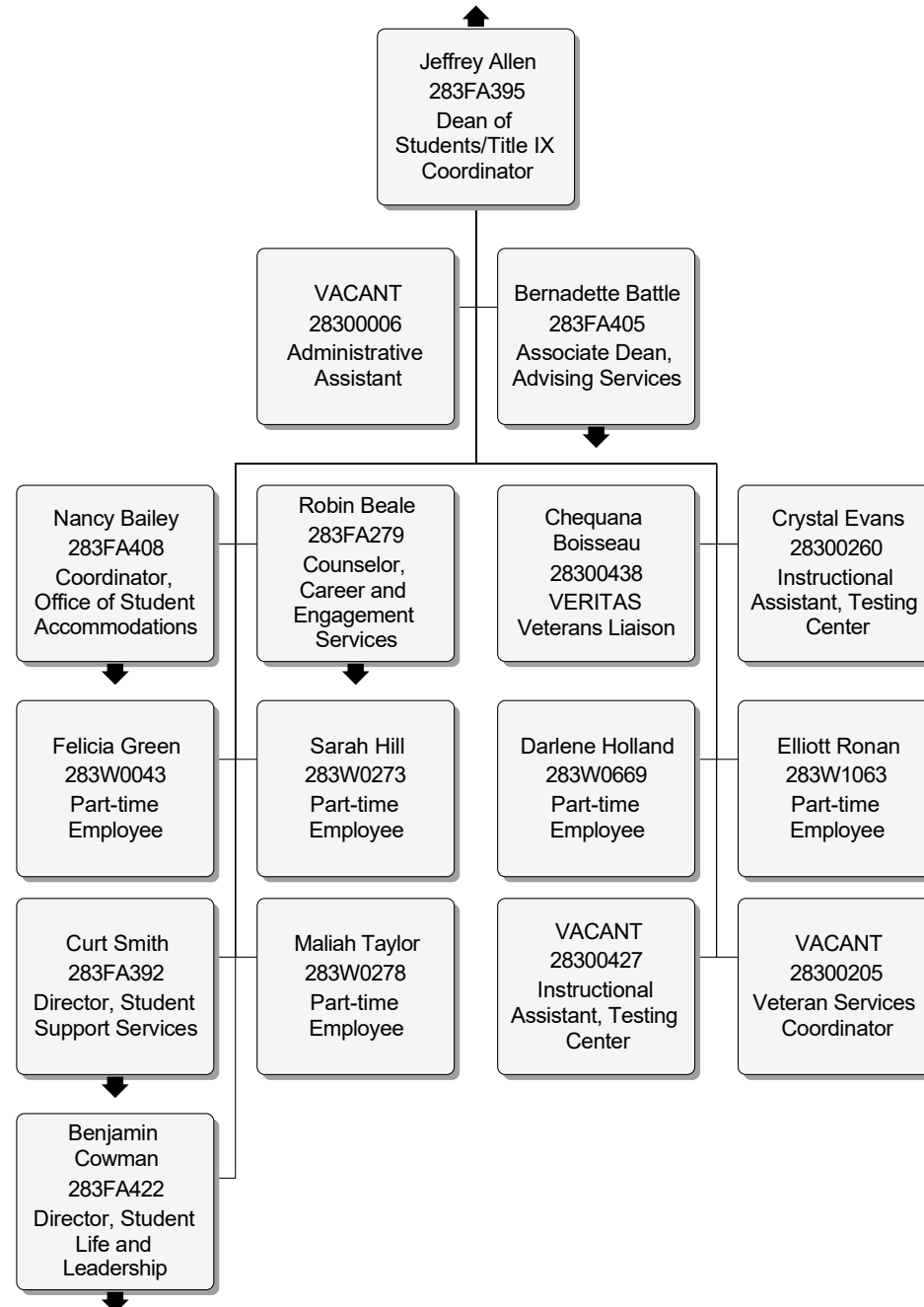


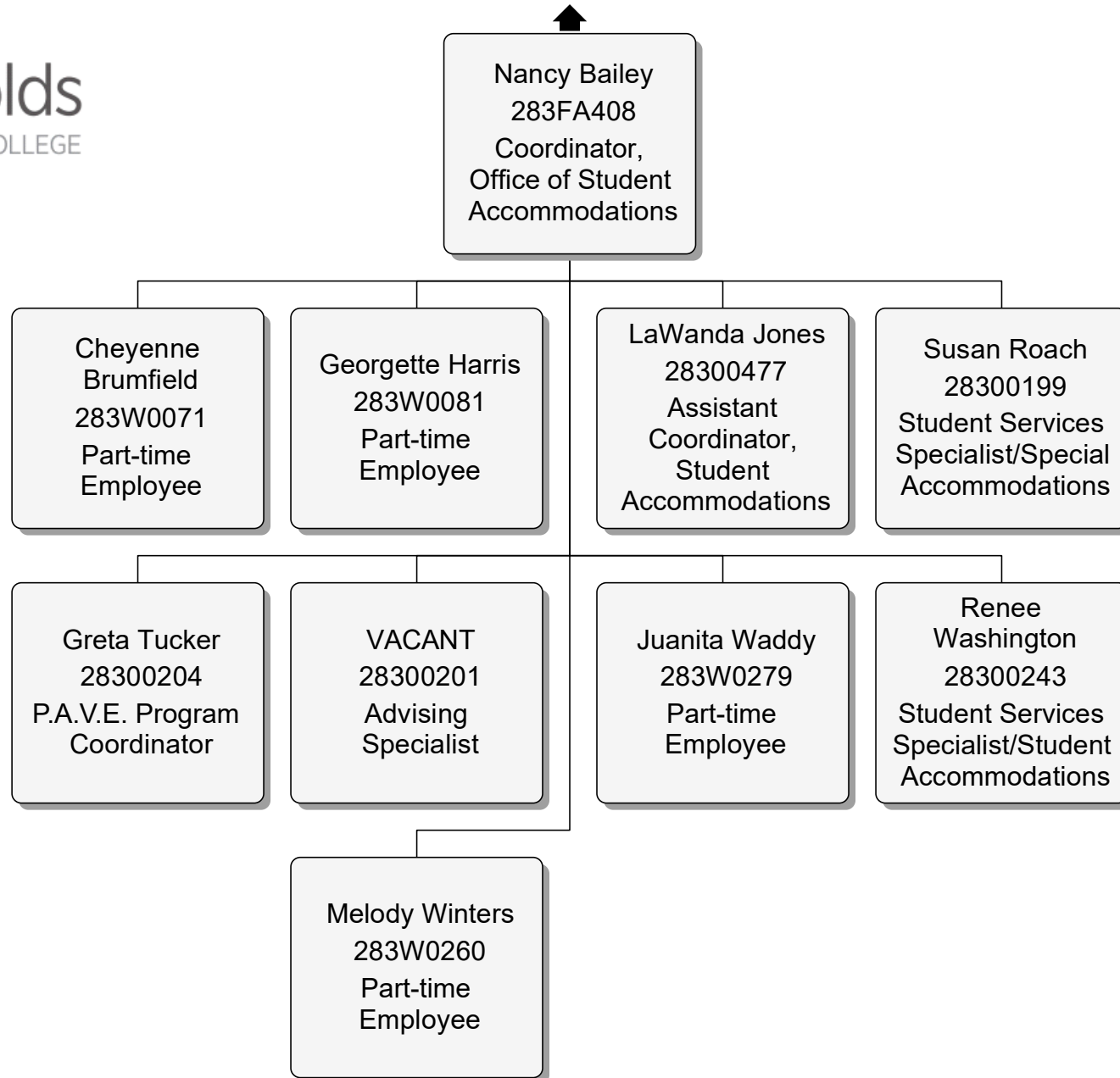


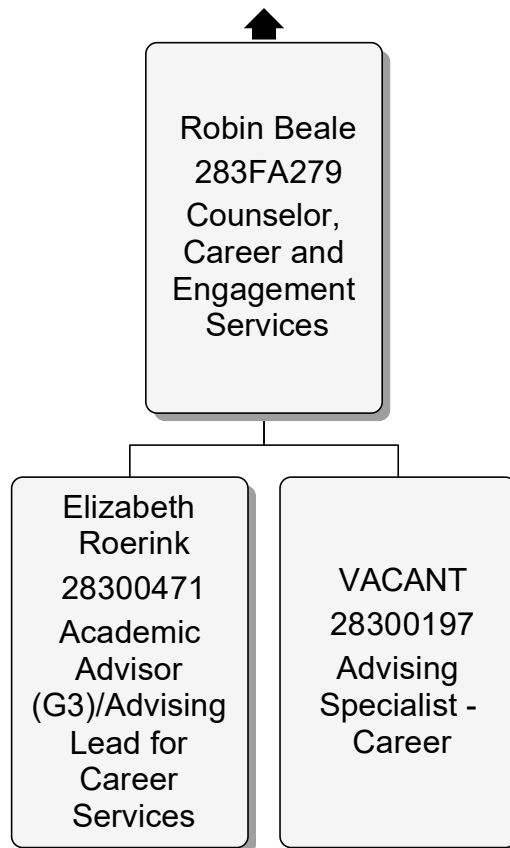


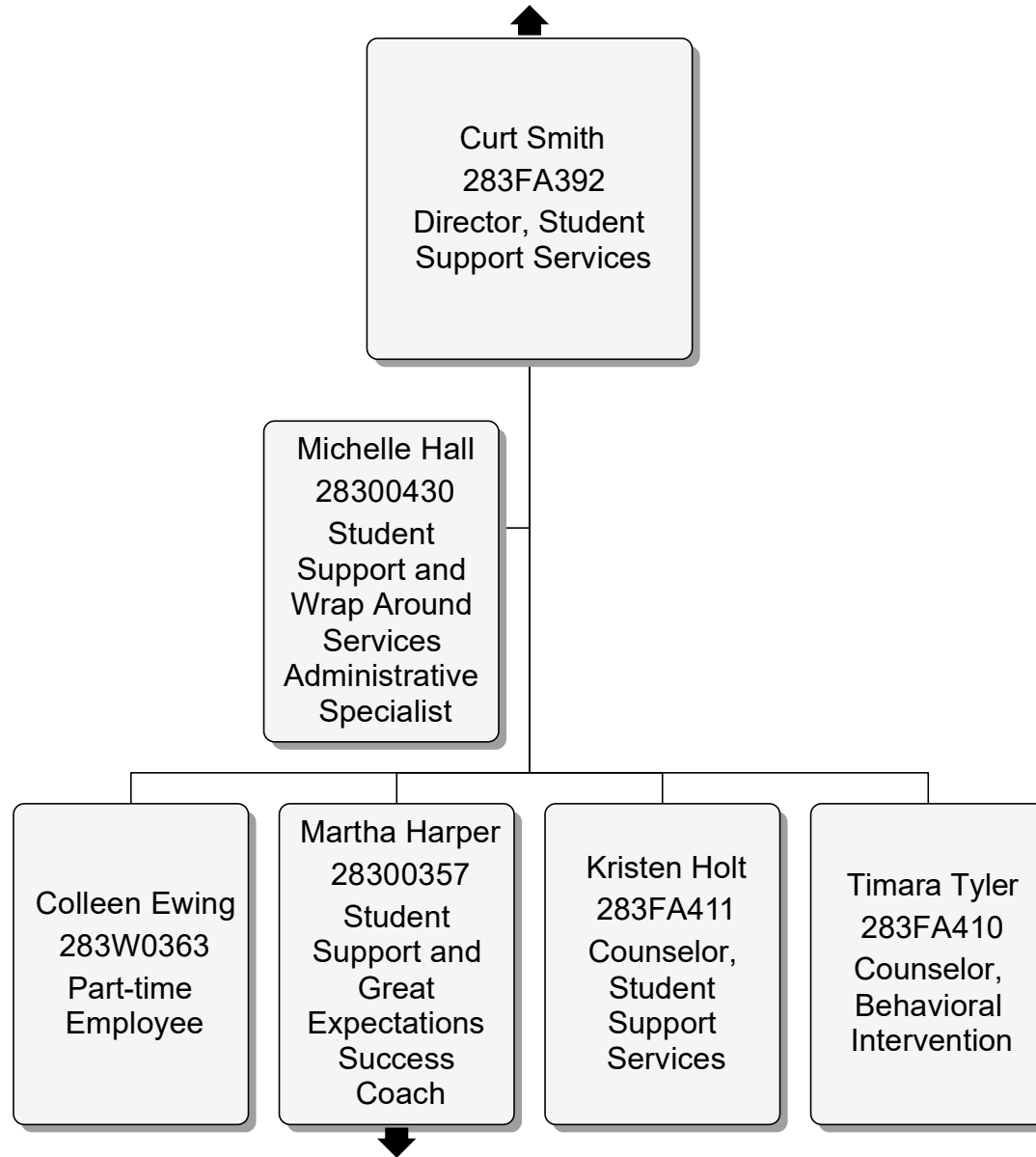


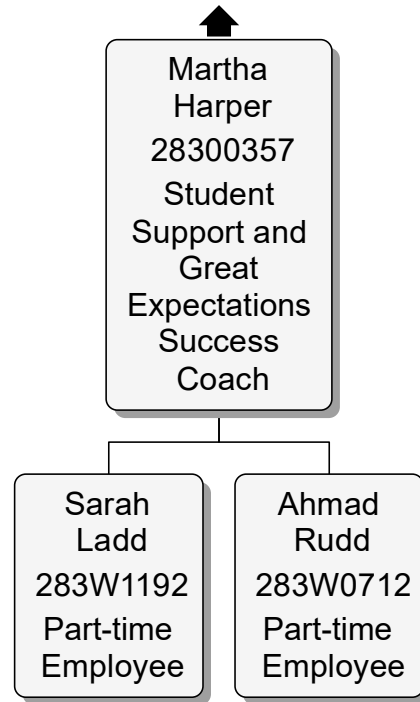


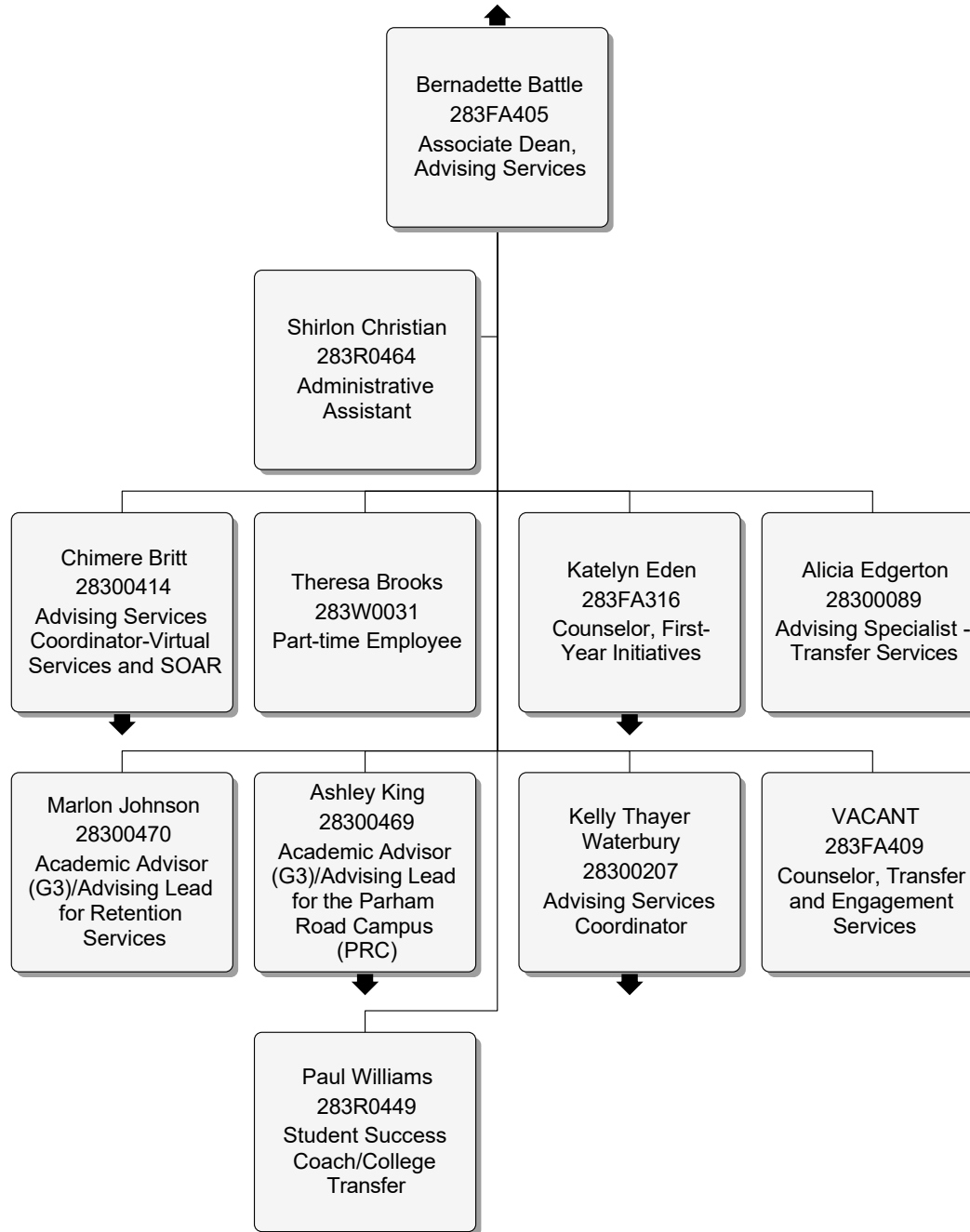














↑
Chimere Britt
28300414
Advising Services
Coordinator-Virtual
Services and SOAR

Elizabeth
Woolf
283W0341
Part-time
Employee

